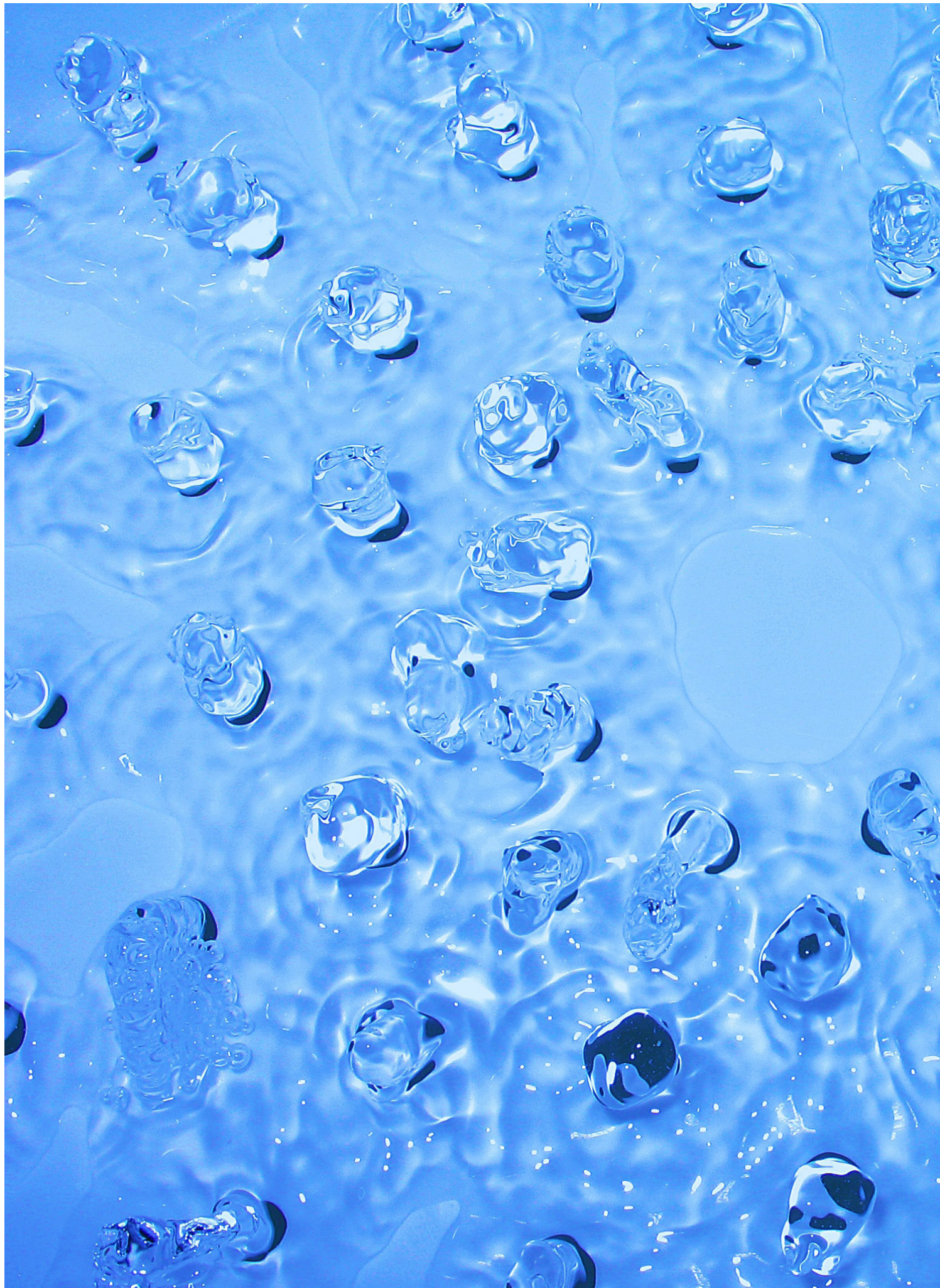


The background of the entire page is a close-up, high-speed photograph of water droplets falling and creating ripples on a surface. The droplets are in various stages of impact, with some showing a crown-like shape. The overall color palette is a range of blues, from deep navy to light sky blue.

SANITARY WATER MANAGEMENT

Portfolio

ENGLISH **EDITION**

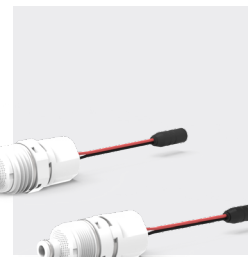


SANITARY WATER MANAGEMENT

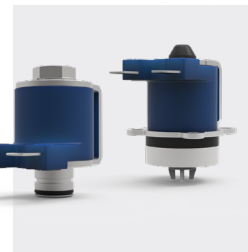
CEME Group introduces its wide range of components dedicated to sanitary market.

These products have been designed with the aim of bringing innovative solutions and high-quality components.

CEME has always developed products in compliance with the most relevant regulations related to the main sanitary applications, such as electronic taps and the washing system.



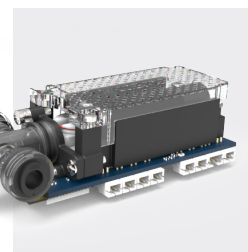
CARTRIDGE SOLENOID VALVES



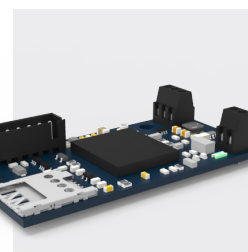
SOLENOID PILOTS
Direct and servocontrolled



SOLENOID VALVES



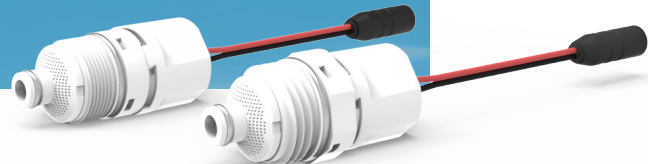
PROPORTIONAL VALVES



ELECTRONIC DEVICES

CARTRIDGE SOLENOID VALVES

PRODUCT DESCRIPTION
The new CEME Solenoid cartridge for sanitary market is a 2/2 way servo controlled valve with Ø 5 mm. The main application is electronically controlled sanitary fittings, battery driven (latching 6V) and power supply (12V DC). Thanks to the flow rate optimization, the Ø 5 mm can meet all the sanitary taps' requirements. While designing the valve, our efforts and attention were focused on the water hammer: the test results rate this valve at the top level. The hydraulic and mechanical concept has been developed considering long-term performances, durability and battery life as priority targets. All the materials are compliant with the main regulations in drinking-water applications.

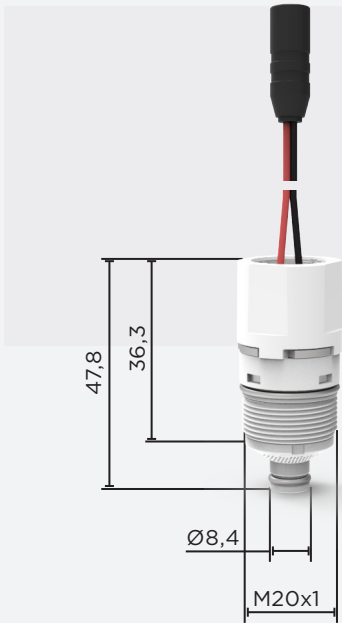


GENERAL FEATURES

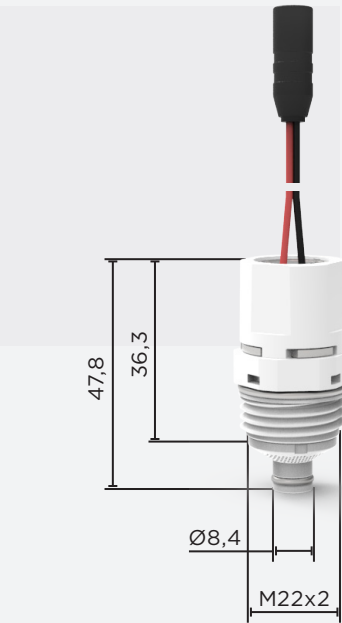
Long life material
Interchangeable plastic filter
Very compact design
Low power consumption
Servo controlled
100% tested with water and air
IP grade: IP65
Suitable for chemical disinfection (Chloramine) as well as thermal disinfection

MATERIALS

PLASTIC MATERIAL	PPSU - R5100
SEAL MATERIAL	All the seals are in Liquid silicon rubber
OTHER MATERIAL	Stainless steel (spring and plunger)
MATERIAL APPROVALS	FDA, DM174, ACS, NSF, WRAS, DVGW
APPROVALS	ACS, NSF, WRAS, CE

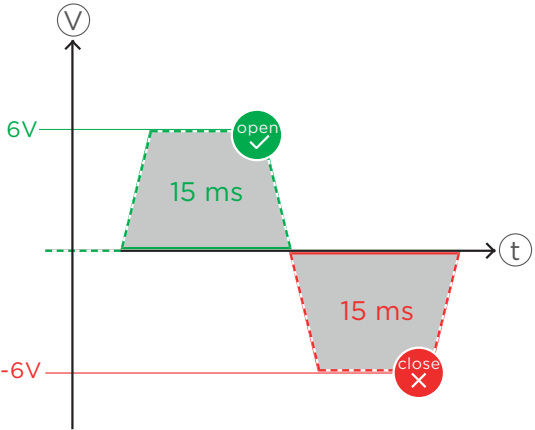
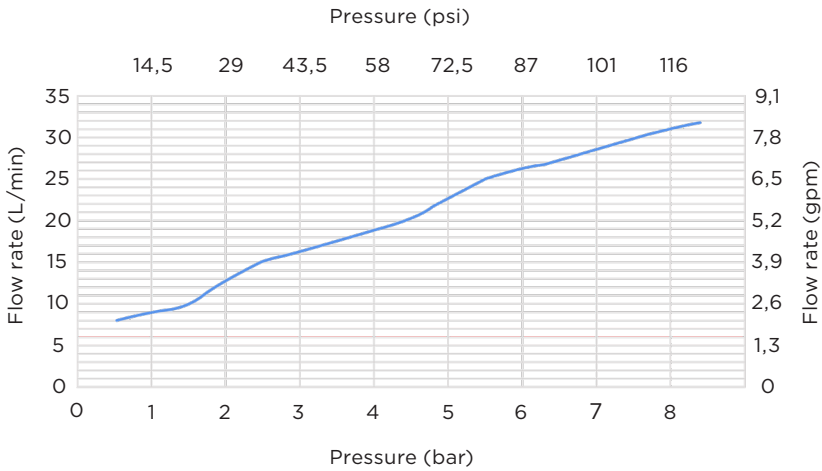


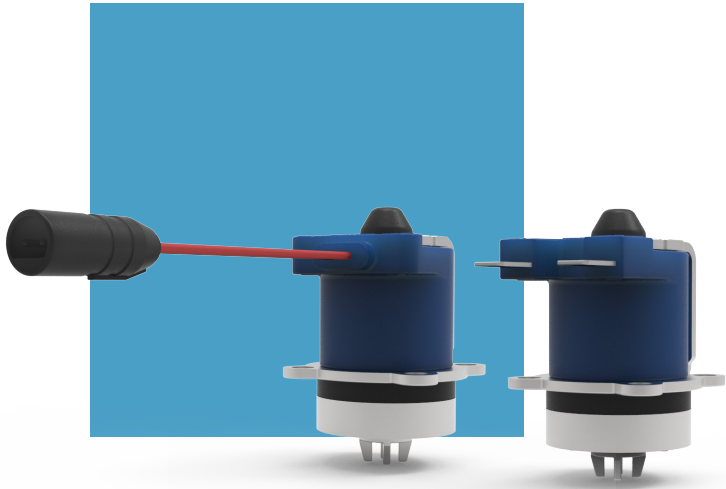
L400



L500

WORKING CHARACTERISTICS	WORKING PRESSURE	0,5 ÷ 10,0 bar (7,25 ÷ 145 PSI)
	PRESSURE BURST	According to EN60730
	WATER HAMMER	According to EN60730
	FLOW DIRECTION	Unidirectional
	VALVE POSITION	Any position
	WORKING FLUID	Tap water
	POWER SUPPLY ABSORPTION PULSE	6V 1W 170mA Latching solenoid (impulse 15ms minimum)
	INSULATION CLASS	H according with EN 60730
	FLUID TEMP	5° ÷ 95°C (41° ÷ 203° F)
	AMBIENT TEMP	5° ÷ 95°C (41° ÷ 203° F)
ELECTRICAL SPECIFICATIONS MONOSTABLE	ELECTRICAL CONNECTION	Cable (KCC connector upon request)
	COIL POWER	1,5W (12V DC)
	OPERATING VOLTAGE	(12V DC) at 20°
	NOMINAL CURRENT	125 mA (12V DC)
	ED	100%
ELECTRICAL SPECIFICATIONS LATCHING	ELECTRICAL CONNECTION	Cable (KCC connector upon request)
	COIL POWER	1W (6V)
	OPERATING VOLTAGE	6V (5Vmin) at 20° C
	MAX VOLTAGE SUPPLY	9V
	NOMINAL CURRENT	170 mA (at 6V 25°C)
	PULSE TIME	Close min 15ms / Open min 15ms





SOLENOID PILOTS

SERVO CONTROLLED FOR Ø 11 mm

PRODUCT DESCRIPTION
The new CEME latching Solenoid pilot is a 2/2 way servo controlled valve for Ø 11 mm. The main application is electronically controlled, battery driven sanitary. The hydraulic and mechanical concept has been developed considering long-term performances, durability and battery life as priority targets. All the materials are compliant with the main regulations in drinking-water applications.



GENERAL FEATURES

Long life material
Internal filter (only latching)
Low water hammer
Low power consumption
Servo controlled
100% tested with water and air
Suitable for chemical disinfection (Chloramine) as well as thermal disinfection

MATERIALS

PLASTIC MATERIAL	PA66 GF30%
SEAL MATERIAL	All the seals are in EPDM or LSR
OTHER MATERIAL	Stainless steel (spring and floating core)
MATERIAL APPROVALS	FDA, DM174, ACS, NSF, WRAS
APPROVALS	NSF, ACS, UL, CE, VDE

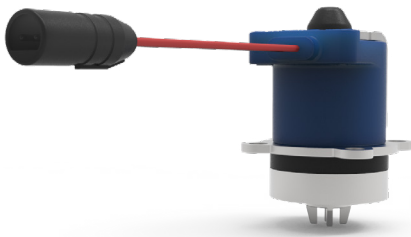
WORKING CHARACTERISTICS

WORKING PRESSURE	0,1 ÷ 10,0 bar (1,45 ÷ 145 PSI)
BURST PRESSURE	Up to 80 bar
WATER HAMMER	Low than 1.5 bar (According to EN60730)
FLOW DIRECTION	Unidirectional
VALVE POSITION	Any position
WORKING FLUID	Tap water
INSULATION CLASS	H according with EN 60730
FLUID TEMP	2° ÷ 65°C (35,6° ÷ 149° F)
AMBIENT TEMP	2° ÷ 65°C (35,6° ÷ 149° F)

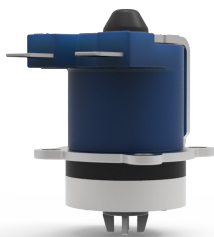
ELECTRICAL SPECIFICATIONS MONOSTABLE

ELECTRICAL CONNECTION	Faston 6,3x0,8 / Faston terminal UNI ISO 6952							
COIL POWER	4,2VA 8,2W	5,5W	6,5VA	8,2VA	7VA	6,5W	7,5VA	
OPERATING VOLTAGE	12Vac/dc	12Vdc	220/240V	230V	24Vac	24Vdc	110/120V	
ED	100%							

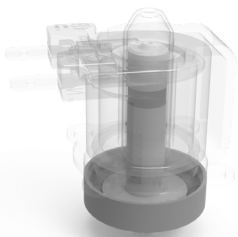
IP 65 CONNECTIONS



FAST ON CONNECTIONS

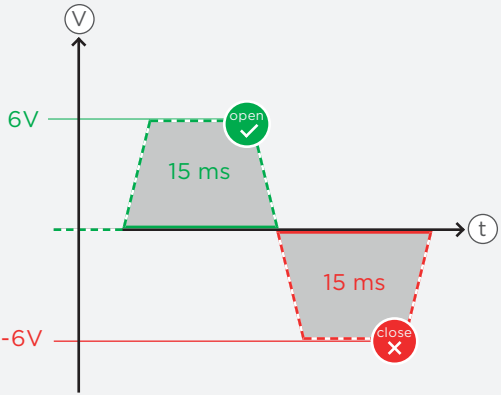


INTERNAL FILTER (LATCHING)



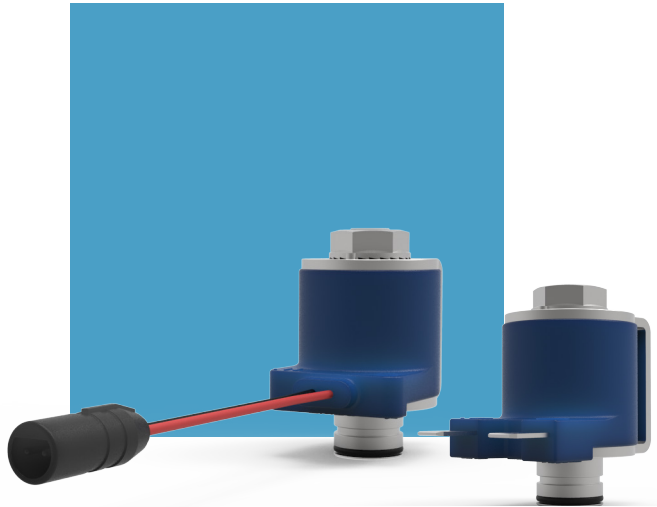
ELECTRICAL SPECIFICATIONS LATCHING

ELECTRICAL CONNECTION	Faston (cable with connector upon request)
COIL POWER	2,25W (6V)
OPERATING VOLTAGE	6V (5Vmin) at 20° C
MAX VOLTAGE SUPPLY	12V
NOMINAL CURRENT	375 mA (at 6V 25°C)
PULSE TIME	Close min 15ms / Open min 15ms



ELECTRICAL SPECIFICATIONS LOW POWER

ELECTRICAL CONNECTION	Faston
COIL TYPE	Applicable to DC coils
INSULATION CLASS	F
RATED VOLTAGE	See table DC coils
OPERATING VOLTAGE RANGE	Nominal voltage +/-10% / Tensione nominale +/-10%
RATED USE CONDITION	Low power: Suggested <15KHz Voltage reduced: nominal voltage 24DC 9VDC Push pull with MOFSET PWM Drive suggested 100ms Maintained voltage for 12DC 4,5VDC
WATERPROOF RATING	IPX0
INSULATION RESISTANCE	The insulation resistor is 50Mff Min at DC 500V between coil and non-charge metal
DIELECTRIC WITHSTAND	It has to test between coil and outdoor metal parts at applying AC600V for 1 second (current ≤0.5mA)



SOLENOID PILOTS

DIRECT ACTING

PRODUCT DESCRIPTION
The new CEME latching Solenoid pilot is a 2/2 way direct action pilot for flush system.
The main application is electronically controlled, battery driven sanitary.
The hydraulic and mechanical concept has been developed considering long-term performances, durability and battery life as priority targets.
All the materials are compliant with the main regulations in drinking-water applications.



GENERAL FEATURES

Long life material
Low power consumption
Direct action
100% tested with water and air
Suitable for chemical disinfection (Chloramine) as well as thermal disinfection

MATERIALS

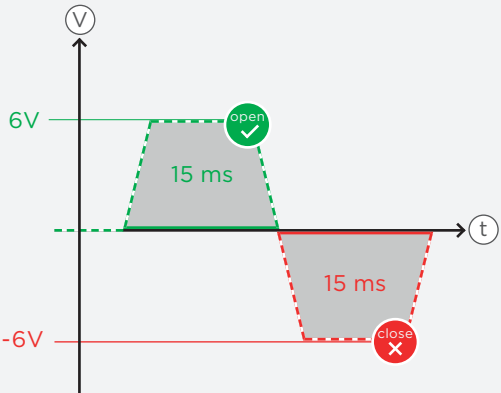
MATERIAL	Stainless steel
SEAL MATERIAL	All the seals are in EPDM or LSR
OTHER MATERIAL	Stainless steel (spring and plunger)
MATERIAL APPROVALS	FDA, DM174, ACS, NSF, WRAS
APPROVALS	ACS, NSF, CE

WORKING CHARACTERISTICS

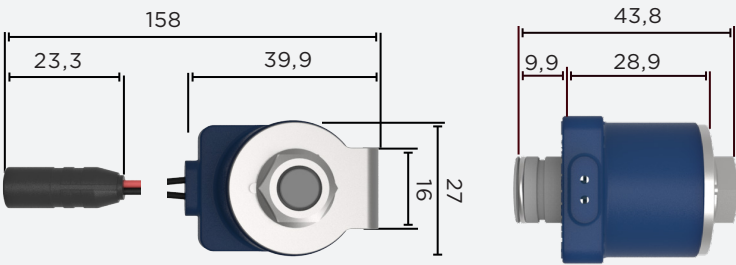
WORKING PRESSURE	0 ÷ 10,0 bar (0 ÷ 145 PSI)
PRESSURE BURST	According to EN60730
WATER HAMMER	According to EN60730
FLOW DIRECTION	Unidirectional
VALVE POSITION	Any position
WORKING FLUID	Tap water
POWER SUPPLY	6V 2.25W 375mA (pulse 15ms minimum)
INSULATION CLASS	H according with EN 60730
FLUID TEMP	0° ÷ 85°C (32° ÷ 185° F)
AMBIENT TEMP	0° ÷ 85°C (32° ÷ 185° F)

ELECTRICAL SPECIFICATIONS LATCHING

ELECTRICAL CONNECTION	Cable with connector
NOMINAL POWER	3.2W (6V)
OPERATING VOLTAGE	6V (5Vmin) at 20° C
MAX VOLTAGE SUPPLY	9V
NOMINAL CURRENT	545 mA (at 6V 25°C)
PULSE TIME	Close min 15ms / Open min 15ms



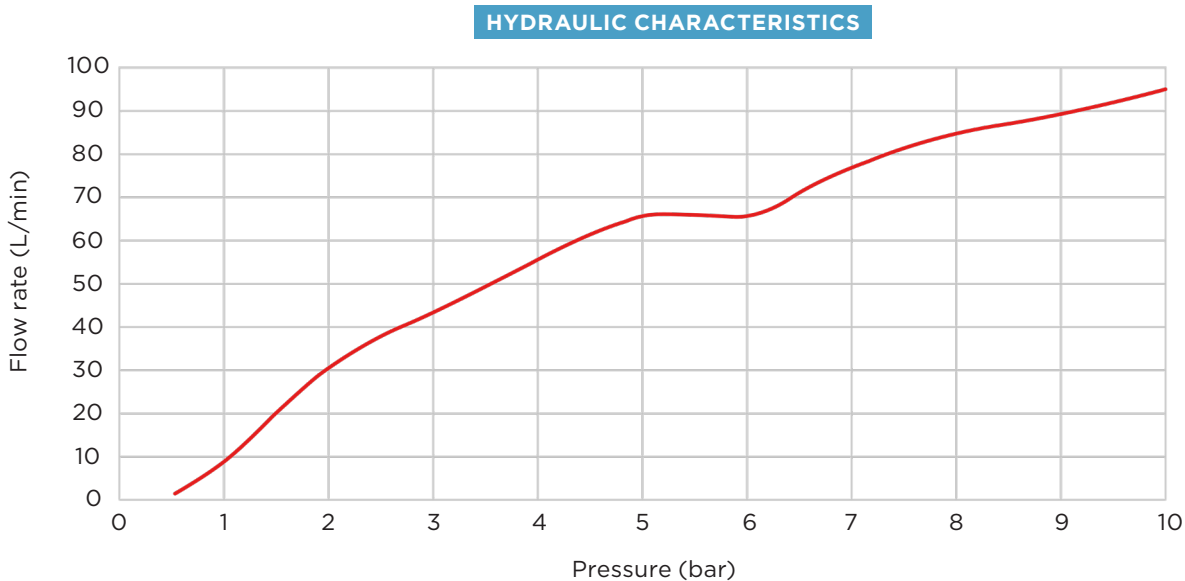
DRAWING



SOLENOID VALVES



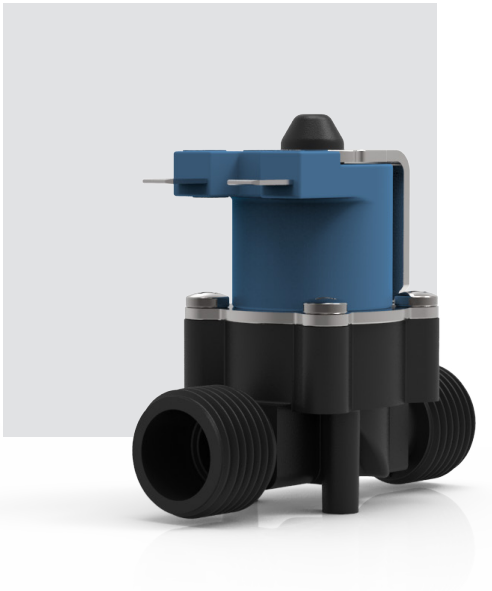
PRODUCT DESCRIPTION
The new CEME Solenoid Valve for water management market is a 2/2 way servo controlled valve with Ø11mm. The main application is sanitary market, different power supply available. Thanks to the flow rate optimization, the Ø11mm can meet all the sanitary market requirements. While designing the valve, our efforts and attention were focused on the water hammer: the test results rate this valve at the top level. The hydraulic and mechanical concept has been developed considering long terms of performances and durability.



GENERAL FEATURES	Long life material							
	External filter replaceable							
	Very compact design							
	Low power consumption							
	Servo controlled							
	100% tested with water and air							
	IP grade: IPX0							
	Suitable for chemical disinfection (Chloramine) as well as thermal disinfection							
MATERIALS	PLASTIC MATERIAL	PA66 GF50%						
	SEAL MATERIAL	All the seals are in EPDM or LSR						
	OTHER MATERIAL	Stainless steel						
	MATERIAL APPROVALS	KTW, ACS, NSF, WRAS						
	APPROVALS	NSF, ACS, UL, CE, VDE						
WORKING CHARACTERISTICS	WORKING PRESSURE	0,1 ÷ 10,0 bar (1,45 ÷ 145 PSI)						
	PRESSURE BURST	According to EN60730						
	WATER HAMMER	According to EN60730						
	FLOW DIRECTION	Unidirectional						
	VALVE POSITION	Any position						
	WORKING FLUID	Tap water						
	INSULATION CLASS	H according with EN 60730						
	FLUID TEMP	5° ÷ 65°C (41° ÷ 150° F)						
	AMBIENT TEMP	5° ÷ 65°C (41° ÷ 150° F)						
ELECTRICAL SPECIFICATIONS	ELECTRICAL CONNECTION	Faston 6,3x0,8 / Faston terminal UNI ISO 6952						
	COIL POWER	4,2VA 8,2W	5,5W	6,5VA	8,2VA	7VA	6,5W	7,5VA
	OPERATING VOLTAGE	12Vac/dc	12Vdc	220/240V	230V	24Vac	24Vdc	110/120V
	ED	100%						

ELECTRICAL SPECIFICATIONS LATCHING	ELECTRICAL CONNECTION	Faston (cable with connector upon request)				
	COIL POWER	2,25W (6V)				
	OPERATING VOLTAGE	6V (5Vmin) at 20° C				
	MAX VOLTAGE SUPPLY	12V				
	NOMINAL CURRENT	375 mA (at 6V 25°C)				
	PULSE TIME	Close min 15ms / Open min 15ms				
SPECIFICATION	CONNECTION	ORIFICE (MM)	PRESSURE MIN	PRESSURE MAX	FILTER	CHECK VALVE
	G 3/4" - PF Ø6MM	11	0,1 bar (1,45 PSI)	10 bar (145 PSI)	✓	✓
	G 3/4" - PF Ø8MM	11	0,1 bar (1,45 PSI)	10 bar (145 PSI)	✓	✓
	G 3/4" - PF Ø10MM	11	0,1 bar (1,45 PSI)	10 bar (145 PSI)	✓	✓
	G 3/4" - PF Ø1/4"	11	0,1 bar (1,45 PSI)	10 bar (145 PSI)	✓	✓
	G 1/2" - G 1/2"	11	0,1 bar (1,45 PSI)	10 bar (145 PSI)	✓	/
	G 3/4" - G 1/2"	11	0,1 bar (1,45 PSI)	10 bar (145 PSI)	✓	✓
	G 3/4" - G 3/4"	11	0,1 bar (1,45 PSI)	10 bar (145 PSI)	✓	✓
	G 3/4" - G 3/8"	11	0,1 bar (1,45 PSI)	10 bar (145 PSI)	✓	✓
	G 3/8" - G 3/8"	11	0,1 bar (1,45 PSI)	10 bar (145 PSI)	/	/
	G 3/4" - G 1/2" 90°	11	0,1 bar (1,45 PSI)	10 bar (145 PSI)	✓	✓
	G 1/2" - G 1/2" 90°	11	0,1 bar (1,45 PSI)	10 bar (145 PSI)	✓	/
	PF Ø6MM - PF Ø6MM	11	0,1 bar (1,45 PSI)	10 bar (145 PSI)	/	/
	PF Ø8MM - PF Ø8MM	11	0,1 bar (1,45 PSI)	10 bar (145 PSI)	/	/
	PF Ø10MM - PF Ø10MM	11	0,1 bar (1,45 PSI)	10 bar (145 PSI)	/	/
	PF Ø1/4" - PF Ø1/4"	11	0,1 bar (1,45 PSI)	10 bar (145 PSI)	/	/
	PF Ø3/8" - PF Ø3/8"	11	0,1 bar (1,45 PSI)	10 bar (145 PSI)	/	/

Please read and agree our GENERAL CONDITIONS before placing an order. All the information are exclusive ownership of CEME S.p.A. All rights reserved ©CEME S.p.A.



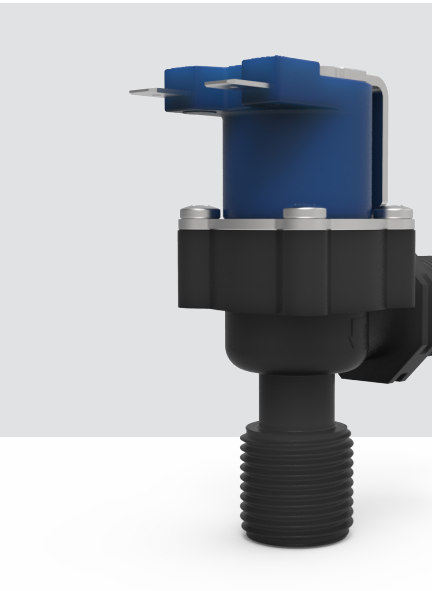
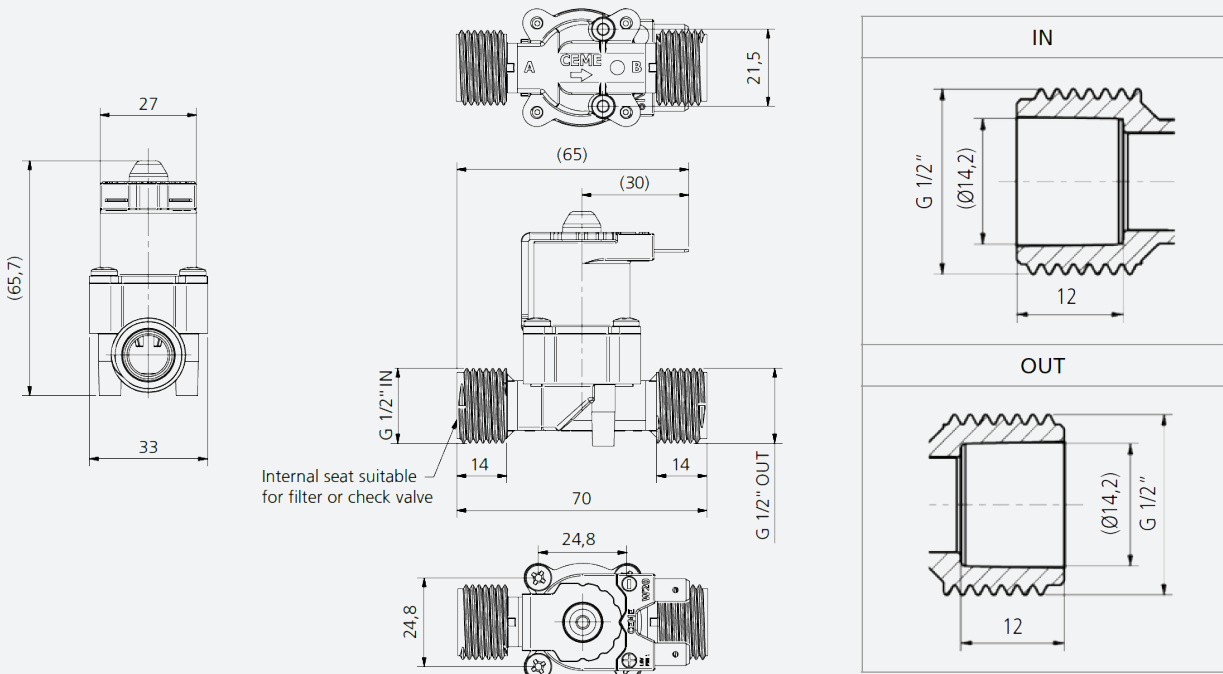
SOLENOID VALVES

THREAD - THREAD

AVAILABLE ALSO
IN VERSION:

	G 1/2" - G 1/2"
	G 3/4" - G 1/2"
	G 3/4" - G 3/4"
	G 3/4" - G 3/8"
	G 3/8" - G 3/8"

EXAMPLE DIMENSION DRAWING: 1/2" M - 1/2" M



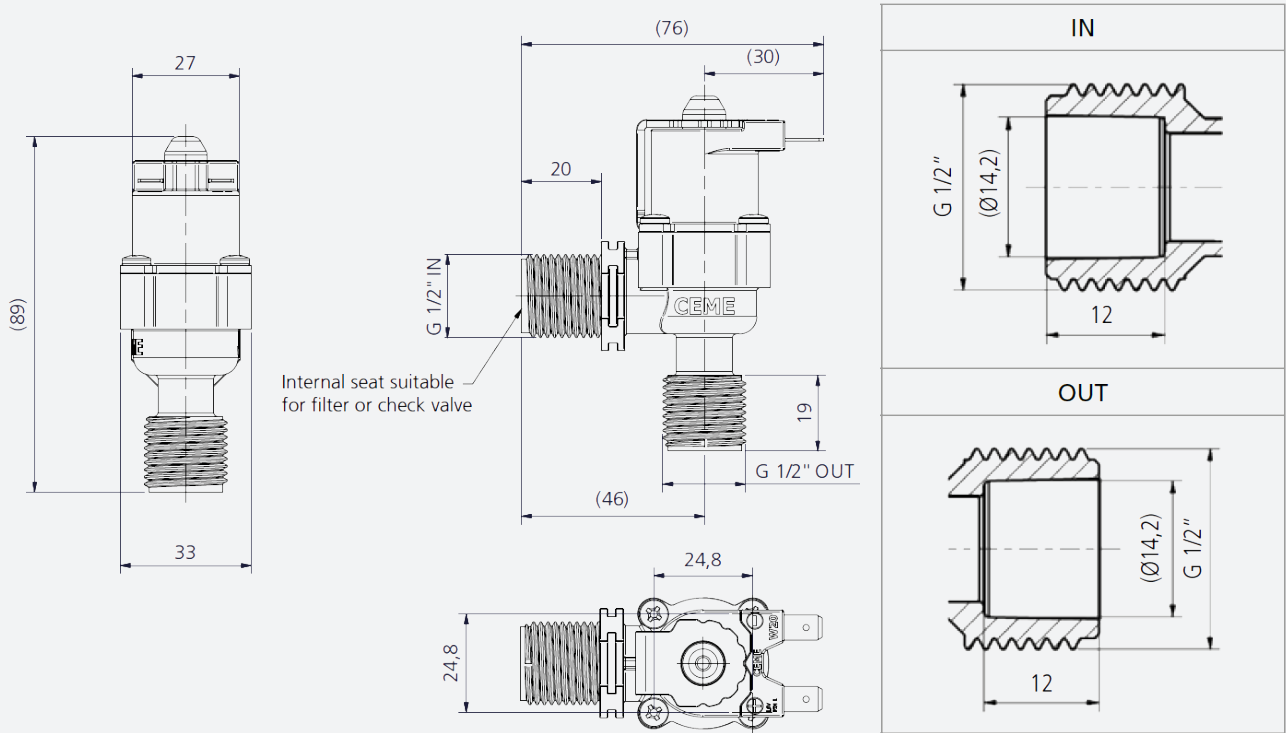
SOLENOID VALVES

THREAD - THREAD 90°

AVAILABLE ALSO
IN VERSION:

G 3/4" - G 1/2" 90°
G 1/2" - G 1/2" 90°

EXAMPLE DIMENSION DRAWING: 1/2" M - 1/2" M 90°



SOLENOID VALVES

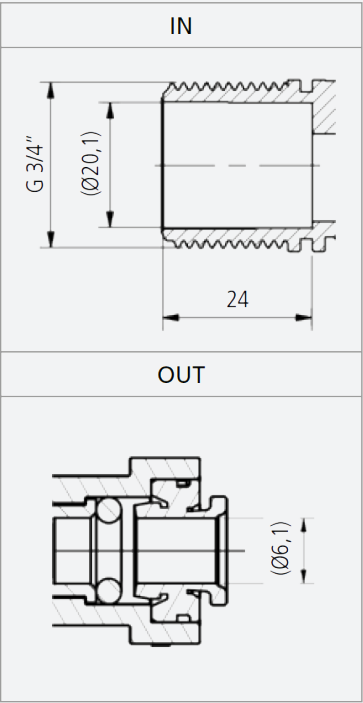
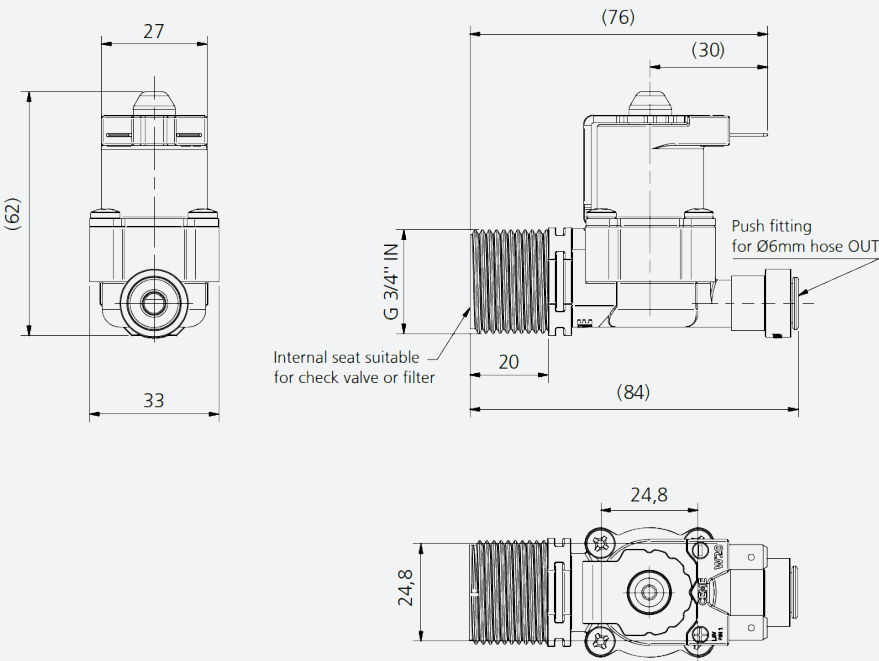
THREAD - PUSH FITTING



AVAILABLE ALSO
IN VERSION:

	G 3/4" - PF Ø6mm
	G 3/4" - PF Ø8mm
	G 3/4" - PF Ø10mm
	G 3/4" - PF Ø1/4"

EXAMPLE DIMENSION DRAWING: 3/4"M - PF Ø6mm



SOLENOID VALVES

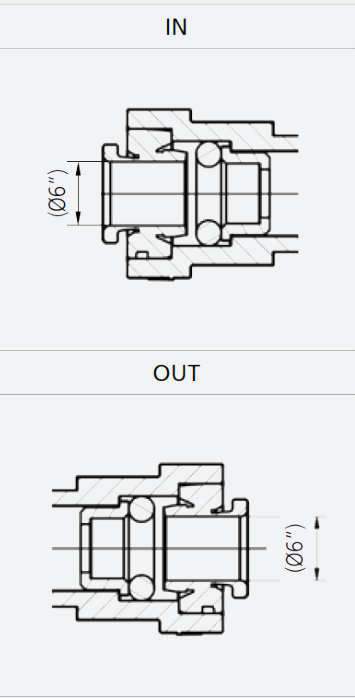
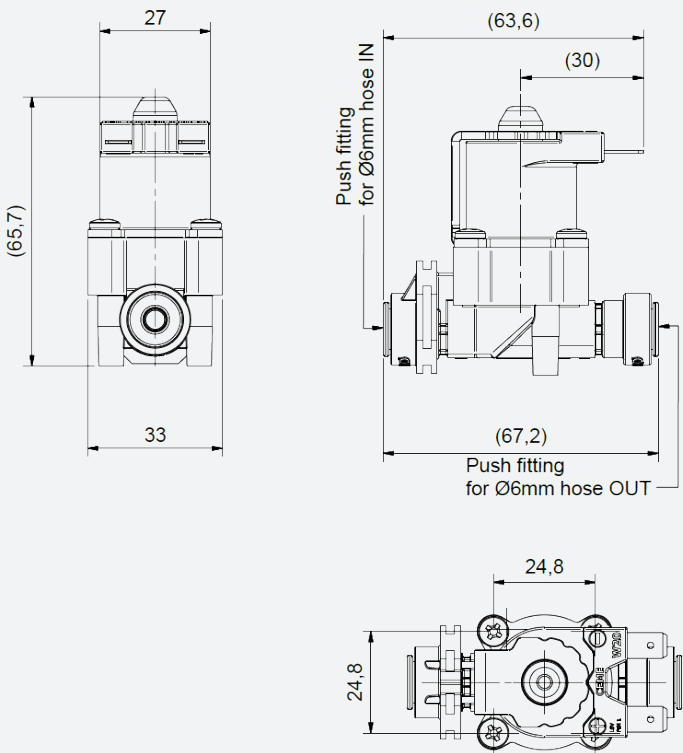
PUSH FITTING - PUSH FITTING



AVAILABLE ALSO
IN VERSION:

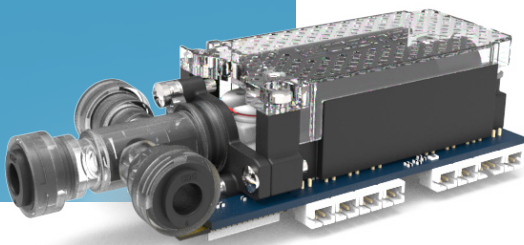
	- PF Ø6mm - PF Ø6mm
	- PF Ø8mm - PF Ø8mm
	- PF Ø10mm - PF Ø10mm
	- PF Ø1/4" - PF Ø1/4"
	- PF Ø3/8" - PF Ø3/8"

EXAMPLE DIMENSION DRAWING: PFØ6mm / PF Ø6mm



PROPORTIONAL VALVES

IFC SYSTEM



PRODUCT DESCRIPTION
IFC system from Ceme are 3- way medium separated valves for precision mixing. This device integrates sensors capabilities and electronic communication enabling management, maintenance, and data collection of fluidics performance from remote. Each product can be fully customized according to application needs, in terms of interfaces, fluidics performance and electronic control input.

GENERAL FEATURES

	High pressure liquid dosing, dispensing and mixing valve
	Closed loop proportional control
	Reliable sealing system with medium separation
	Low power actuator
	Noiseless operation
	Wireless data communication, remote control

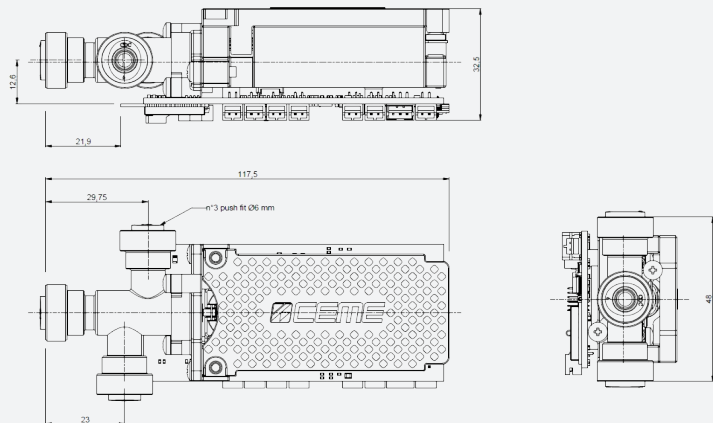
CHARACTERISTICS

SEAL-LESS	No seal between plastic body and ceramic mixer
MEDIA SEPARATED	Drive components completely separated to the water

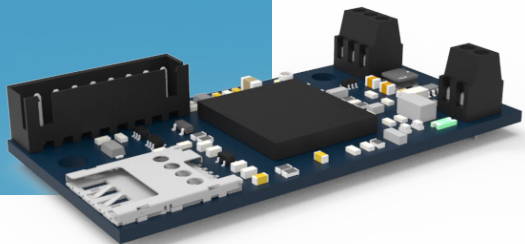
WORKING CHARACTERISTICS

WORKING PRESSURE	0 ÷ 10,0 bar (0 ÷ 145 PSI)
VALVE POSITION	Any position
WORKING FLUID	Tap water
POWER SUPPLY	12/24 Vdc 450 mA MAX
FLUID TEMP	0° ÷ 85°C (32° ÷ 185° F)
AMBIENT TEMP	0° ÷ 85°C (32° ÷ 185° F)

DRAWING



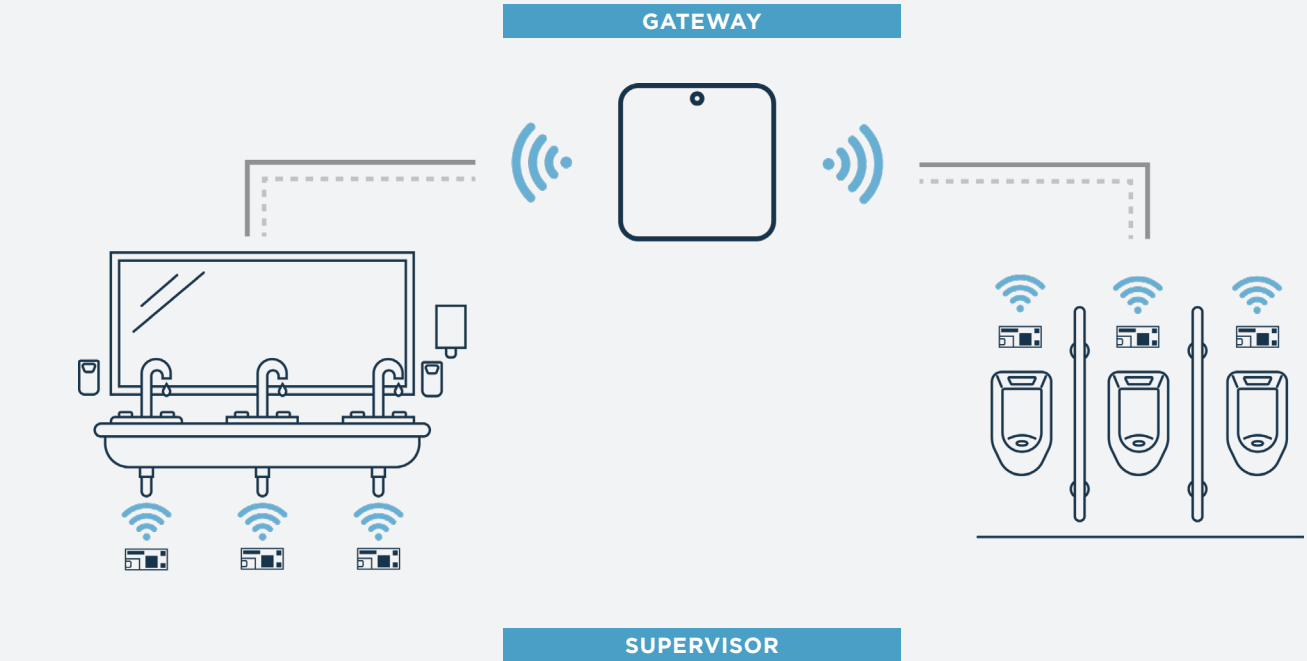
ELECTRONIC DEVICES



PRODUCT DESCRIPTION
All the information processed through this device can be sent to a cloud platform such as: Amazon AWS, Microsoft Azure or custom cloud. IoT devices in the industrial world are a fundamental aspect of the optimization process of the production. The secure transferring of data is an ideal base for several standard applications or a simple way to solve applications not supported from traditional technology.

GENERAL FEATURES

Very compact size
Multiple frequency bands LTE Cat NB2



GENERAL FEATURES

Ultra-low power consumption
Battery monitor
Latching pulse monitor
Opening or closing failure
Counter and output for Sanification
Battery life over 5 Years
Mesh network
Compatible with all the electronics device* in the market

WATER MANAGEMENT ACCESSORIES



PF CONNECTION

The innovative Push-Fit Connection **allows the Water Series Valves to be connected to the water supply system** precisely and safely using a rapid connection. This fitting contains a check valve that allows the water inside the valve to be isolated from that of the supply system.



MOUNTING BRACKET

Plastic bracket used for **fixing the water valve** where necessary. The bracket can be used in different positions.

CERTIFICATIONS AND SUSTAINABILITY

OUR PROGRESS

The Company is committed to making ongoing progress, while also strengthening its relationship with its key stakeholders. As a direct consequence of this commitment, the Group aims to continue to increase its understanding of how social and environmental sustainability matters relate to its daily activities: this is the main reason behind CEME Group's decision to extend its GHG emissions monitoring and reporting to new Scope 3 categories.

QUALITY ASSURANCE

Customer satisfaction, systematic product improvement and excellent service: these are the key elements in the success of a company.

The path leading to their achievement must follow the rigid rules known as "Quality Assurance". The idea of quality has always been part of the culture of CEME Group and its brands: a continuous process control, a computerized network to guarantee product conformity, the recording of each step to ensure an effective analysis of data, as well as a complete and efficient traceability of both components and finished products.





CONTACT INFORMATIONS

www.cemegroup.com
in

Registered Office
Viale dell'Industria, 5
27020 - Trivulzio (PV), Italy

Ph.: +39 0382 93011
E-mail: info@cemegroup.com