

# INDUSTRIAL APPLICATIONS

*Your needs,  
our ideas*

**SPECIALIZED**  
IN SOLUTIONS

ENGLISH EDITION

## ABOUT US

CEME Group and its Brands, with extensive experience in the industrial sector and constant technological research and innovation have propelled CEME Group to a leading position in the development of solenoid valves and other valves and solutions for the fluid control. Our product range has been meticulously crafted in accordance with our founding principles: quality, flexibility, and reliability.

With a blend of tradition, experience, and innovation, we stand prepared for the challenges and opportunities of tomorrow.  
WE ARE READY FOR THE FUTURE.

**CEME** offers a wide range of certified solenoid valves for critical fluid control applications and is a reference for many markets such as coffee, home appliances, Sanitary, beverage, HVAC, Medical, automotive and industrial.



**ULKA** is the undisputed market and technology leader for solenoid pumps. ULKA pumps are setting the standards for all the major brands of coffee machines and many other critical applications, in the beverage, HVAC and medical.



Since 1960 **ODE** has been providing customized designs and production of solenoid valves for manufacturers and system integrators following our fundamental principles of quality, adaptability and reliability.



**ACL** is manufacturing a wide range of solenoid valves in different versions since 1987. ACL's expertise is testified by the large number of customers worldwide, which are acting in all the industrial fields where the control of fluid is necessary.



**PROCON** provides new pumps to manufacturers and end users for systems that require transferring clean liquids at pressures up to 17 bar and flows up to 41 liters per minute. Furthermore, PROCON and its products are highly responsive to our customers' changing requirements.



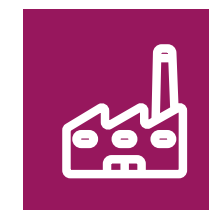
**MICROPUMP** specializes in OEM and industrial pump applications where precise fluid control is required, offering standard models, configure-to-order options and customized solutions. Partnering with a global network of distributors and with sales offices in Europe and Asia, MICROPUMP provides comprehensive support, expertise and product availability.



## YOUR NEEDS OUR IDEAS

The current product portfolio includes a **wide range of valves, pumps and integrated control systems** resulting from the continuous refinement of technical innovations to reflect the needs and practical requirements of our customers.

Many years of expertise in fluid control systems allow CEME Group to meet the needs of several industrial sectors such as Iron & Steel, Chemical / Petrochemical, Pharmaceutical / Medical, Mechanical, Automotive, Food & Beverage and Agricultural.



INDUSTRIAL



AUTOMOTIVE



WATER  
MANAGEMENT



AGRICULTURAL



CLEANING



HVAC/R



STEAM



MEDICAL

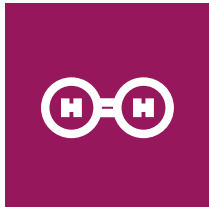




SYSTEMS  
INDUSTRIAL



COMPRESSORS



HYDROGEN



WELDING



PNEUMATIC



THERMOREGULATION

VALVES

- Solenoid Valves
- Total Separation Solenoid Valves
- Atex Solenoid Valves
- Pneumatic Valves

PUMPS

- Solenoid Pumps
- Rotary Vane Pumps
- Gear Pumps
- Peripheral Pumps

HI-TECH

- Pressure Transducers
- Proportional Valves
- Flowmeters
- +Smart Range
- Gateway
- Driver



SYSTEMS  
AUTOMOTIVE



GARAGE  
EQUIPMENT



CAR WASH



RAILWAY



GREEN  
TECHNOLOGY

VALVES

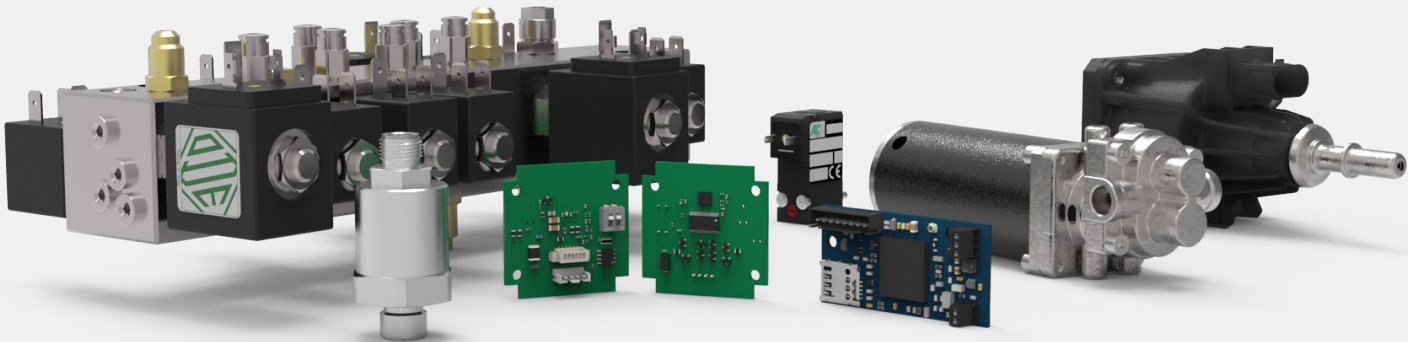
- Solenoid Valves
- Pneumatic Valves
- Manifold

PUMPS

- Solenoid Pumps
- Rotary Vane Pumps
- Gear Pumps
- Peripheral Pumps

HI-TECH

- Pressure Transducers
- Proportional Valves
- Flowmeters
- +Smart Range
- Gateway
- Driver



SYSTEMS

WATER MANAGEMENT



- VALVES
- Solenoid Valves
- Total Separation Solenoid Valves
- Aseptic Valves
- Pneumatic Valves
- Manifold
- PUMPS
- Solenoid Pumps
- Rotary Vane Pumps
- Gear Pumps
- Peripheral Pumps
- HI-TECH
- Pressure Transducers
- Proportional Valves
- Flowmeters
- +Smart Range
- Gateway
- Driver

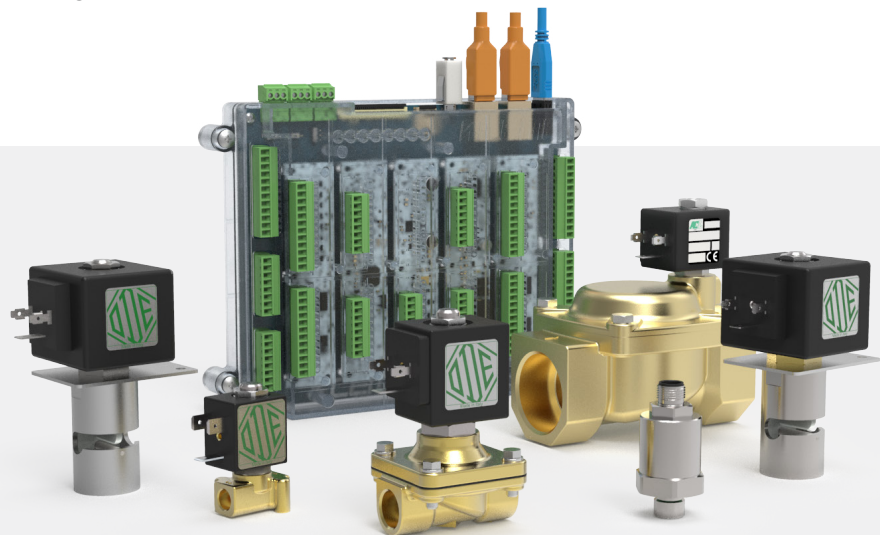


SYSTEMS

AGRICULTURAL



- VALVES
- Solenoid Valves
- Total Separation Solenoid Valves
- Aseptic Valves
- Pneumatic Valves
- Manifold
- PUMPS
- Solenoid Pumps
- Rotary Vane Pumps
- Gear Pumps
- Peripheral Pumps
- HI-TECH
- Pressure Transducers
- Proportional Valves
- Flowmeters
- +Smart Range
- Gateway
- Driver







SYSTEMS  
CLEANING



CLEANING  
MACHINES



SWEEPERS

VALVES

- Solenoid Valves
- Pneumatic Valves
- Manifold

PUMPS

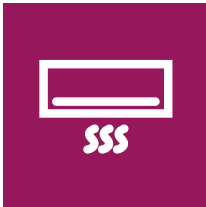
- Solenoid Pumps
- Rotary Vane Pumps
- Gear Pumps
- Peripheral Pumps

HI-TECH

- Pressure Transducers
- Proportional Valves
- Flowmeters
- +Smart Range
- Gateway
- Driver



SYSTEMS  
HVAC/R



AIR  
CONDITIONING



REFRIGERATION



HEATING

VALVES

- Solenoid Valves
- Pneumatic Valves
- Refrigeration Valves

PUMPS

- Solenoid Pumps
- Rotary Vane Pumps
- Gear Pumps
- Peripheral Pumps

HI-TECH

- Pressure Transducers
- Proportional Valves
- Flowmeters
- +Smart Range
- Gateway
- Driver





SYSTEMS  
STEAM



OVENS



IRONING

VALVES

- Solenoid Valves
- Water Valves
- Pneumatic Valves

PUMPS

- Solenoid Pumps
- Rotary Vane Pumps
- Gear Pumps
- Peripheral Pumps

HI-TECH

- Pressure Transducers
- Proportional Valves
- Flowmeters
- +Smart Range
- Gateway
- Driver



SYSTEMS  
MEDICAL



STERILIZATION



VENTILATORS

VALVES

- Solenoid Valves
- Total Separation Valves
- Pneumatic Valves
- Aseptic Valves
- Manifold

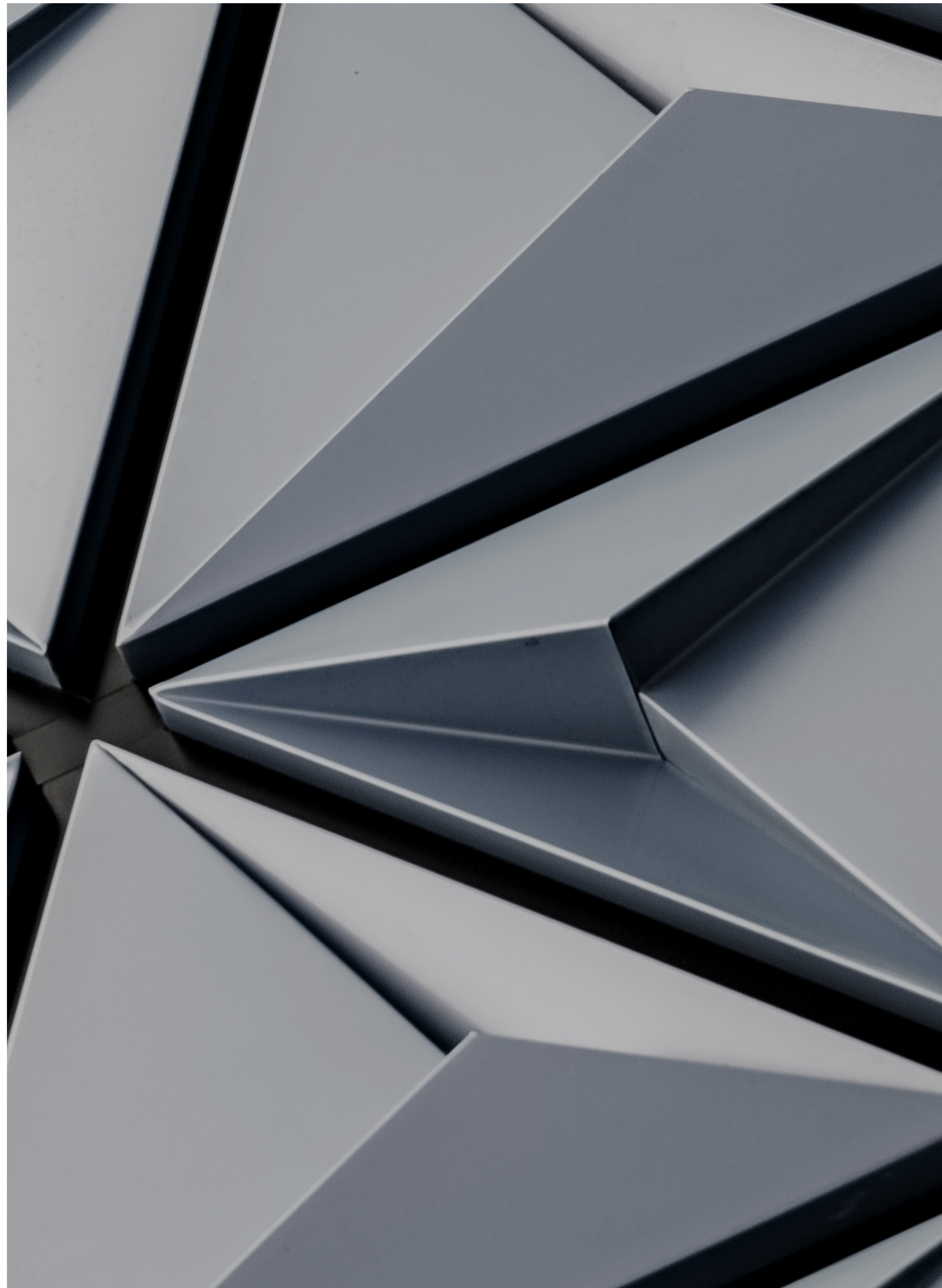
PUMPS

- Solenoid Pumps
- Rotary Vane Pumps
- Gear Pumps
- Peripheral Pumps

HI-TECH

- Pressure Transducers
- Proportional Valves
- Flowmeters
- +Smart Range
- Gateway
- Driver





## INDUSTRIAL SOLENOID VALVES



### PILOT SOLENOID VALVES

A wide range of 2-way and 3-way direct acting solenoid valves, N.O., N.C., with reliable and **proven design for high performance** and available in different body materials: brass, stainless steel and PPS.

**CONNECTIONS**  
1/8" G, 1/4" G, 3/8" G, 1/2" G, 1/4" NPT, 1/2" NPT, flanged  
**PRESSURE**  
0-100 bar



### PROCESS SOLENOID VALVES

A wide range of 2-way **indirect and combined acting solenoid valves**, N.C., N.O., **for high flow rates**, ensuring proper fluid handling.

**CONNECTIONS**  
3/8" G, 1/2" G, 3/4" G, 1 1/4" G, 1 1/2" G, 2" G, 2 1/2" G, 3" G, 3/8" NPT, 1/2" NPT, 3/4" NPT, 1" NPT, 1 1/4" NPT, 1 1/2" NPT, 2" NPT, 2 1/2" NPT, 3" NPT  
**PRESSURE**  
0.1-100 bar (indirect acting) / 0-20 bar (combined acting)

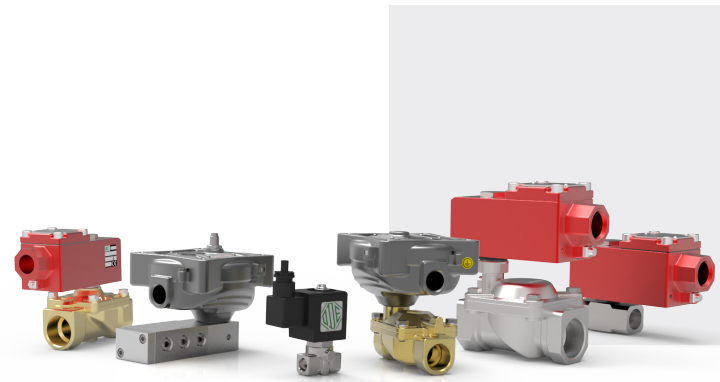


### STEAM AND HIGH TEMPERATURE SOLENOID VALVES

A range of 2-way indirect acting **pilot-operated membrane or piston solenoid valves**, N.C., N.O., for high flow rates and optimal handling of fluids at specific temperatures.

**CONNECTIONS**  
1/2" G, 3/4" G, 1" G, 1/2" NPT, 3/4" NPT, 1" NPT  
**PRESSURE**  
0,1-20 bar





## ATEX SOLENOID VALVES

Solenoid valves with ATEX certification, designed for use with **potentially explosive atmospheres** as per Directive 2014/34/UE. Available in different materials: brass, stainless steel and aluminium. Direct, indirect and combined acting. Available versions: Ex d, Ex m and Ex nA.



## TOTAL SEPARATION SOLENOID VALVES

Solenoid valves particularly suitable for the proper handling of aggressive or non-contaminable fluids. The fluid is solely in contact with the valve body and the isolation elements, **hence free from any kind of chemical contamination**. Particularly suitable for applications in the food and beverage, chemical and medical environments.



## MANIFOLDS AND CUSTOM SOLUTIONS

Integrated plug-and-play systems made from various construction materials such as brass, aluminium, stainless steel and technopolymers. Thanks to their compact design, these solutions make it possible to **combine space-efficient footprint with robust seal capacity and ease of installation and maintenance**.

### ELEMENTS

Electromagnetic kits, non-return valves, connectors, pressure transducers and sensors.

### PRESSURE

0-100 bar



## HIGH PRESSURE SOLENOID VALVES

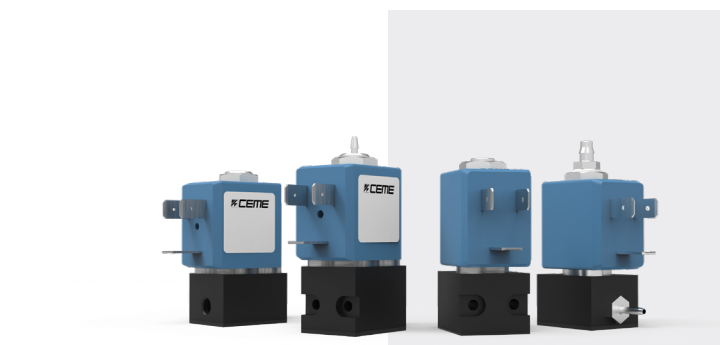
A range of 2-way solenoid valves direct and indirect acting, N.O., N.C., for high pressures and high flow rates. Available in direct drive configuration or **piston solenoid valves ensuring an optimal management of pressurized fluids up to 100 bar**.

### CONNECTIONS

Flanged, G 1/8, G 1/4, G 1/2

### PRESSURE

0-100 bar



## INKJET SOLENOID VALVES

CEME high-quality inkjet 3/2 and 2/2 way direct acting solenoid valves, designed for industrial printing.

### SIZE

From 10mm to 22mm

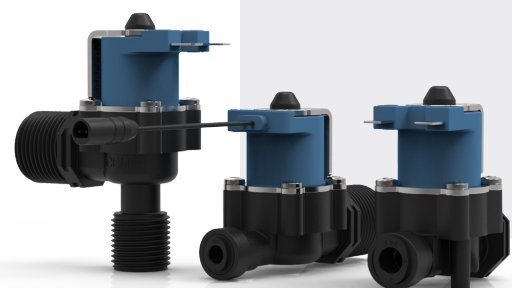
### COMPATIBILITY

Compatible with common inks, undergoing rigorous testing for reliability with a life expectancy exceeding 12 million cycles.



## REFRIGERATION SOLENOID VALVES

A wide range of 2/2 way solenoid valves tailored for refrigeration gas interception. The compact and high-performance valve series, comes in various Kv factors and connection options, including versions with double or triple outlets for cost-effective installations.



## WATER VALVES

CEME solenoid valves for the water management market are 2/2 way pilot valves with a Ø11 mm size and a **PA66 body**. They can operate within **pressure ranges of 0.1 to 10 bar**. Versions with snap-action and low consumption with cable connectors are available.



## PNEUMATIC VALVES

A range of angle-seat or in-line pneumatically actuated valves **made from very high-quality, corrosion-resistant materials**. A complete series of 2-way valves available in normally closed, normally open and double-acting configurations, with above/below seat flow direction. Angle seat or coaxial valves with stainless steel AISI 304 or AISI 316 body.

### CONNECTIONS

1/2" G 4" G, 1/2" NPT 4" NPT, tri-clamp, DIN 11850-2 and 11850-3, ANSI 150 flange, DIN 2576 flange, DIN 2543 flange. Modular version available.

### PRESSURE

0 - 40 bar

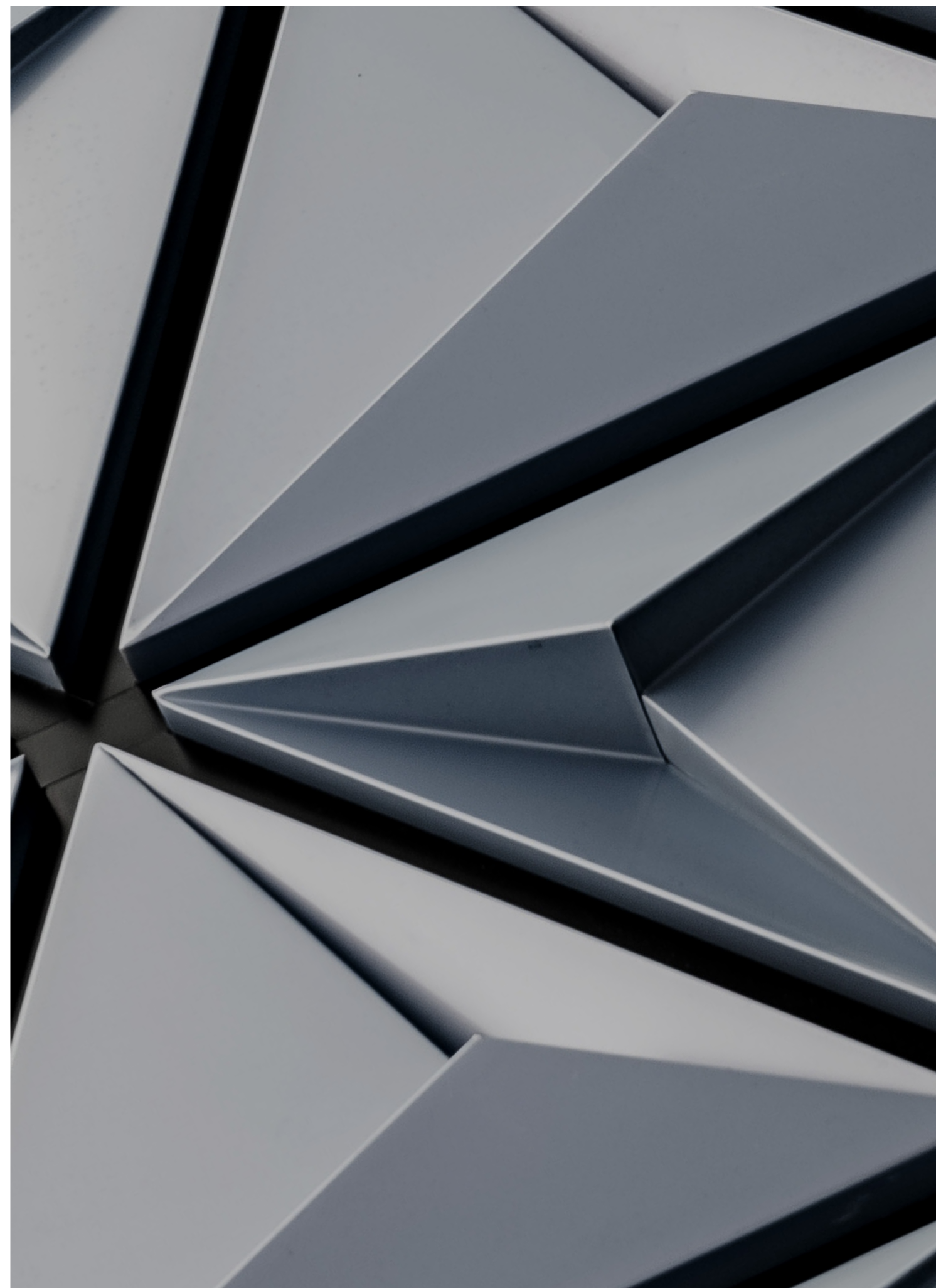


## ASEPTIC VALVES

The new line of aseptic membrane valves is made from high-quality, corrosion-resistant materials. This type of product is characterised by pneumatic or manual actuation and is capable of operating with pressure under seat and with bidirectional flow.

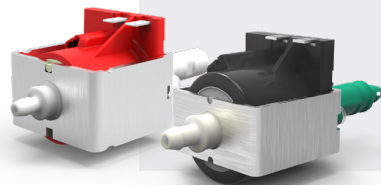
**The EDPM + PTFE "dual layer" confers great resistance on the membrane, making it suited to use in particularly critical environments.**

This range of valves, compliant with the PED, FDA and USP standards (EC 1935/2004; FDA 21CFR 177.1550; USP40), is ideal for aseptic/hygienic applications.



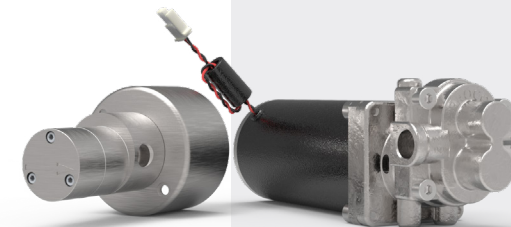


## INDUSTRIAL PUMPS



### SOLENOID PUMPS

A wide range of compact solenoid pumps, from 2,5 to 20 bar, certified VDE, CE, UL, NSF. Available for many industrial applications.



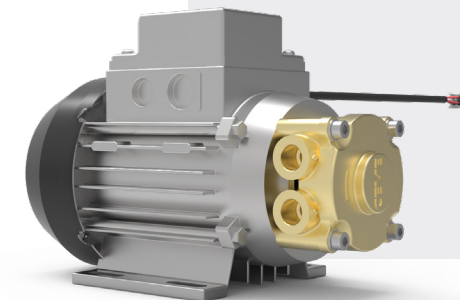
### GEAR PUMPS

These self-priming, maintenance-free pumps are designed for efficiency and reliability. Made of durable stainless steel, they offer low vibration and pulsation characteristics. Equipped with G 1/8" inlet and outlet connections, different elastomers, and powered by a 24VDC brushed motor, they ensure versatility and durability.



### ROTARY VANE PUMPS

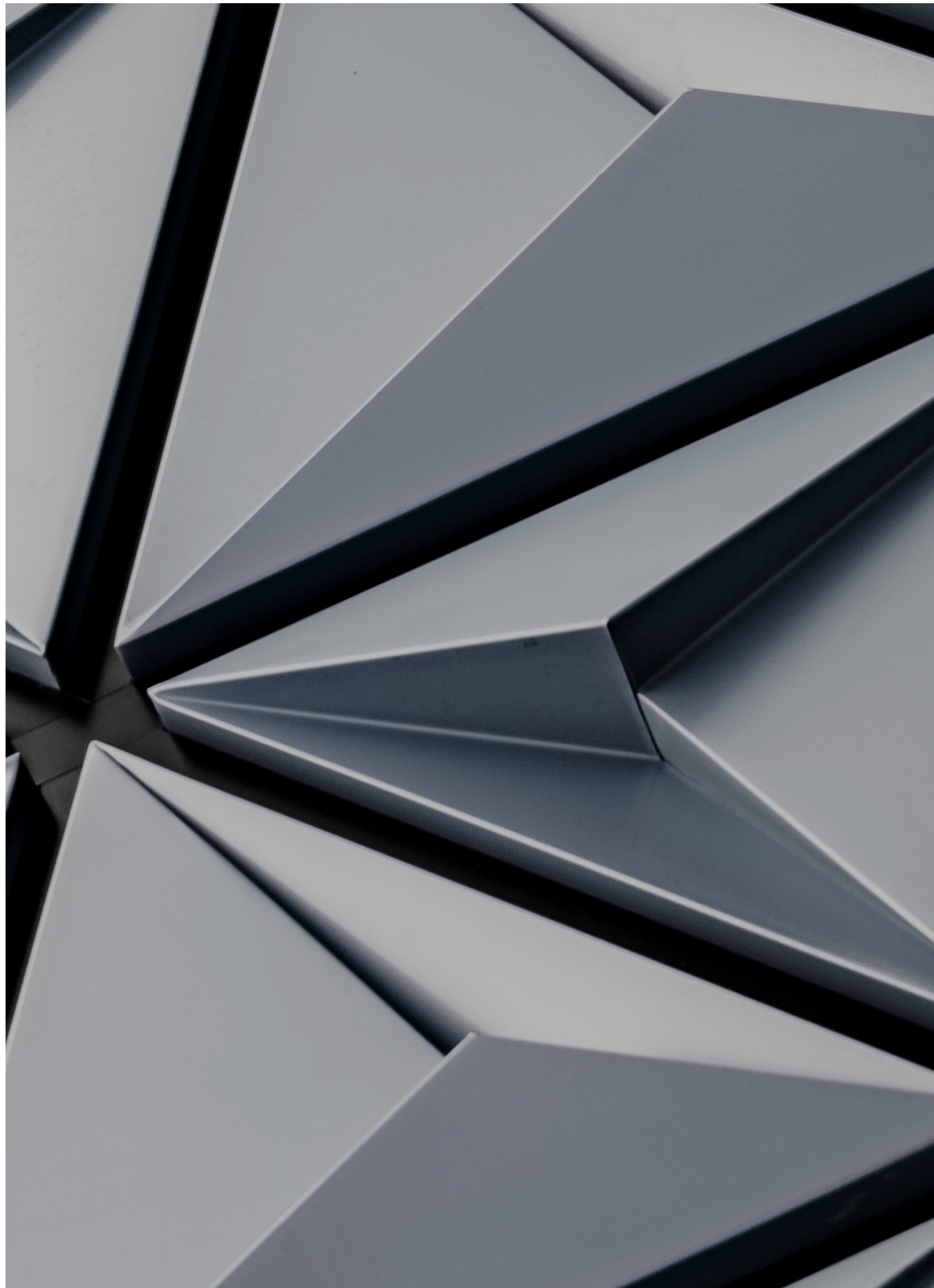
A significant variety of Rotary Vane Pumps, made of brass, steel, or technopolymer PPS, is available. They come in various sizes, ranging from 50 l/h to 500 l/h, with a maximum pressure of 17 bar. Additionally, electrical motors are available as an accessory for the Rotary Vane Pumps.



### PERIPHERAL PUMPS

The CEME Group Peripheral Pumps are suitable for use with water and low corrosion/abrasion fluids, making them ideal for cooling circuits in welding machines. Made of brass, with seals made of EPDM/CERAMIC/GRAPHITE and stainless steel shafts. Available with power supply at 230V/1/50Hz, 120V/1/60Hz, 400V/1/50Hz. Suitable for ambient temperatures up to 45°C and fluid temperatures up to 80°C.





## INDUSTRIAL ACCESSORIES



### ELECTRICAL POSITION FEEDBACK

Specifically designed for the Angle Seat Valves 21IZ1 Series. A proximity switch activated by the actuator piston during valve opening provides electrical position feedback.

The Shuttle Valves 21SH1 Series can be integrated with an electrical position feedback in the upper part of the body. During valve opening, the actuator piston triggers a magnetic switch, providing electrical position feedback.



### ELECTRICAL POSITION INDICATOR

The electrical position indicator, that can be installed on all pneumatic angle seat valves series 21IZ1 and 21IZ3, allows to **monitor the opening and closing valve status** through a local visual control (LED) or remotely via electrical signal.



### STROKE LIMITER

The stroke limiter, available only preassembled onto the valve, can be installed on all ODE pneumatic angle seat valves series 21IZ1/21IZ3. **Its function is to influence the plug position by limiting the stroke** of the valve and consequently by adjusting the flow rate through the valve combined to it. In case of lack of pilot pressure or due to mechanical/electrical failures it can act as emergency manual override.

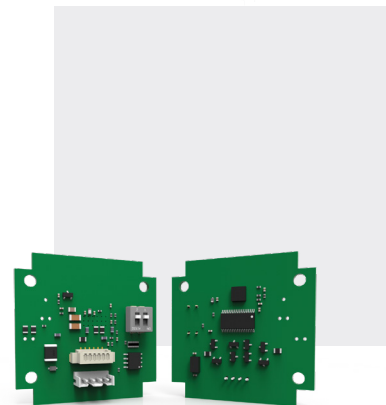


## INDUSTRIAL HI-TECH



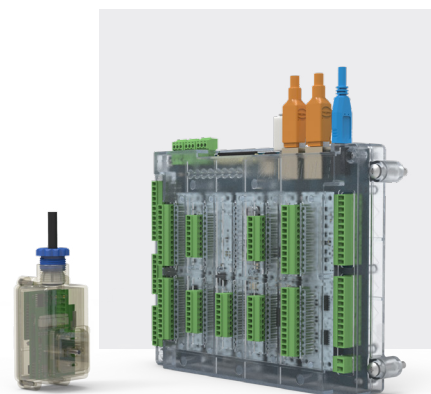
### SOLENOID VALVES AND PROPORTIONAL VALVES

**Proportional valves with solenoid or stepper motor** acting for gases and liquids, suitable for a wide range of working pressures and temperatures. Proportional solenoid valves ensure 100% duty cycle and IP 65-67 electrical protection. **Stepper motor valves** guarantee a faster and more accurate control of fluids compared to standard proportional valves. Low hysteresis effects. The heat sink is an option.



### HI-TECH SYSTEM DRIVER

**Electronic drivers** can be programmed **to control circuits** in a closed loop, **to regulate the flow** respect a target, using a feedback that comes from a sensor (e.g. pressure, flow, temperature); or in an open loop, to regulate the flow proportional to a control signal, that originates from the host system.



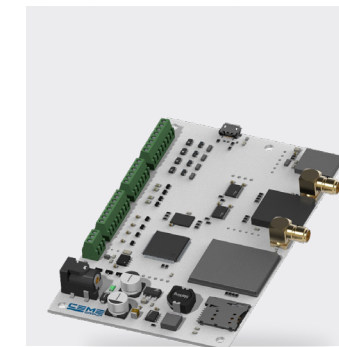
### HI-TECH SYSTEM +SMART RANGE

**+SMART ONE** is a system that enables the control, monitoring, and management of machine parts or entire machines through the integration of a PLC. **+SMART CUBE V2** features an architecture that allows for the integration of various I/O modules available on the main board, providing a solution that reduces overall dimensions and adapts to all needs.



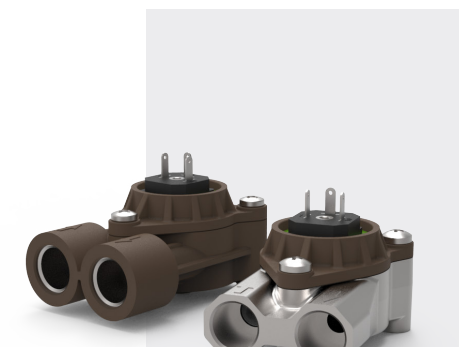
### HI-TECH SYSTEM PRESSURE TRANSDUCERS

**Pressure transducers generate an electrical output signal** proportional to the inlet pressure. The ceramic sensor detects the pressure of the most common fluids: air, water, gas, steam and light aggressive media. PT Series fulfil the requirements of the EMC Directive.



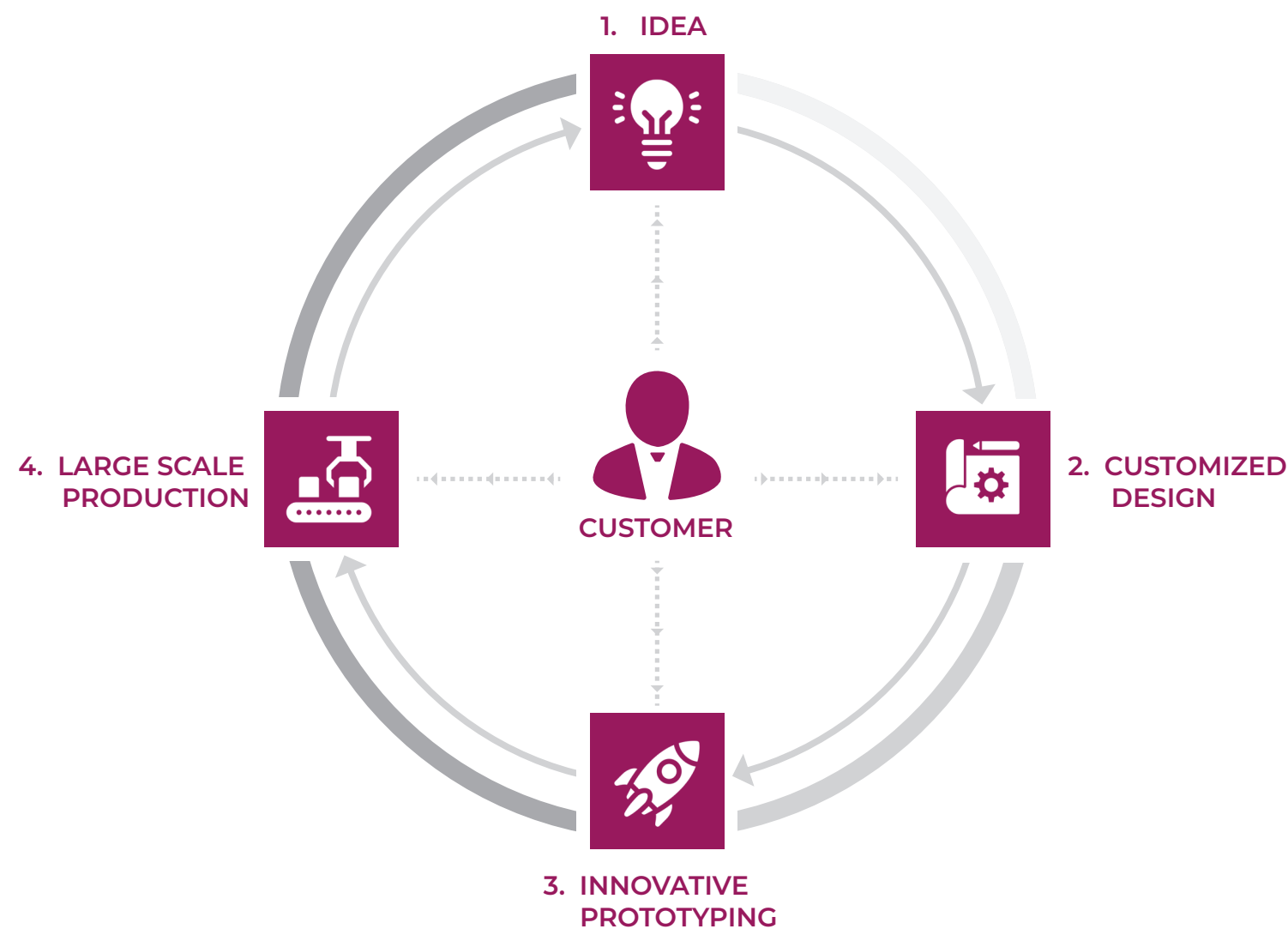
### HI-TECH SYSTEM GATEWAY

All the information processed through this device can be sent to a personalized **cloud platform**. IoT devices in the industrial world are a **fundamental aspect** of the optimization process of the production. The **secure transferring of data** is an ideal base for several standard applications or a simple way to solve applications not supported from traditional technology.



### FLOWMETERS

These components can accurately measure the water flowrate. **Precision, durability and stability** are fundamental features of flowmeters. **CEME Group** flowmeters are suitable for different usage both in the presence of fluids at high temperature and pressure, as well as in applications within environments characterized by limited dimensions. Our flowmeters are certified NSF, FDA, LFGB, CE.



## ENGINEERING SYSTEM DEVELOPMENT & CODESIGN

### CUSTOMER'S IDEA

From every idea springs innovation. At ground zero, we recognize that behind every idea is a customer with a need to fulfill. CEME Group positions itself as a catalyst, transforming the idea into a concrete path. Our mission begins with listening and collaboration, guiding you through the development that turns the abstract into a tangible and functional product.

### CUSTOMIZED DESIGN

We are aware of the crucial importance of the co-design phase in the development process. Our team of engineers will collaborate closely with your company to translate ideas into tangible solutions. Our mission is to create products that not only meet your specific requirements but also exceed expectations.

### INNOVATING PROTOTYPING

Prototyping is the pulsating heart of innovation. At CEME Group, we invest in the most advanced prototyping technologies to ensure the accuracy and functionality of our products. From concept to tangible reality, our prototyping process is the launching pad for the success of your project.

### LARGE SCALE PRODUCTION

We don't stop at the prototyping phase. CEME Group is equipped with state-of-the-art production facilities capable of handling batches of any size. We are flexible and able to adapt to your needs, producing high-quality components in small batches for specialized projects, as well as in medium or large batches for large-scale productions.



# CERTIFICATIONS

All CEME Group's products of the Industrial range are manufactured in accordance with the most important European and American standards. All the assembled materials have been accurately selected, to ensure the highest level of safety in industrial application.



## ATEX

CEME Group's range of solenoid valves also includes models with Ex d, Ex mb, Ex nA and Ex h ATEX certifications, relating to products and their protection systems designed for use with potentially explosive atmospheres as per Directive 2014/34/EU.



## PED

CEME Group's products are compliant with European Directive 2014/68/EU (Pressure Equipment Directive or PED), applied to the design, manufacture, inspection and testing of pressure equipment.



## MOCA

(Materials and Objects in Contact With Food). The products in the Industrial range are designed and manufactured in accordance with European Regulation No. 1935/2004 and European GMP Regulation No. 2023/2006.



## WRAS

WRAS certification guarantees product compliance with the safety requirements in force for those products intended for sale in the United Kingdom dedicated to use with drinking water.



## NSF CERTIFICATION

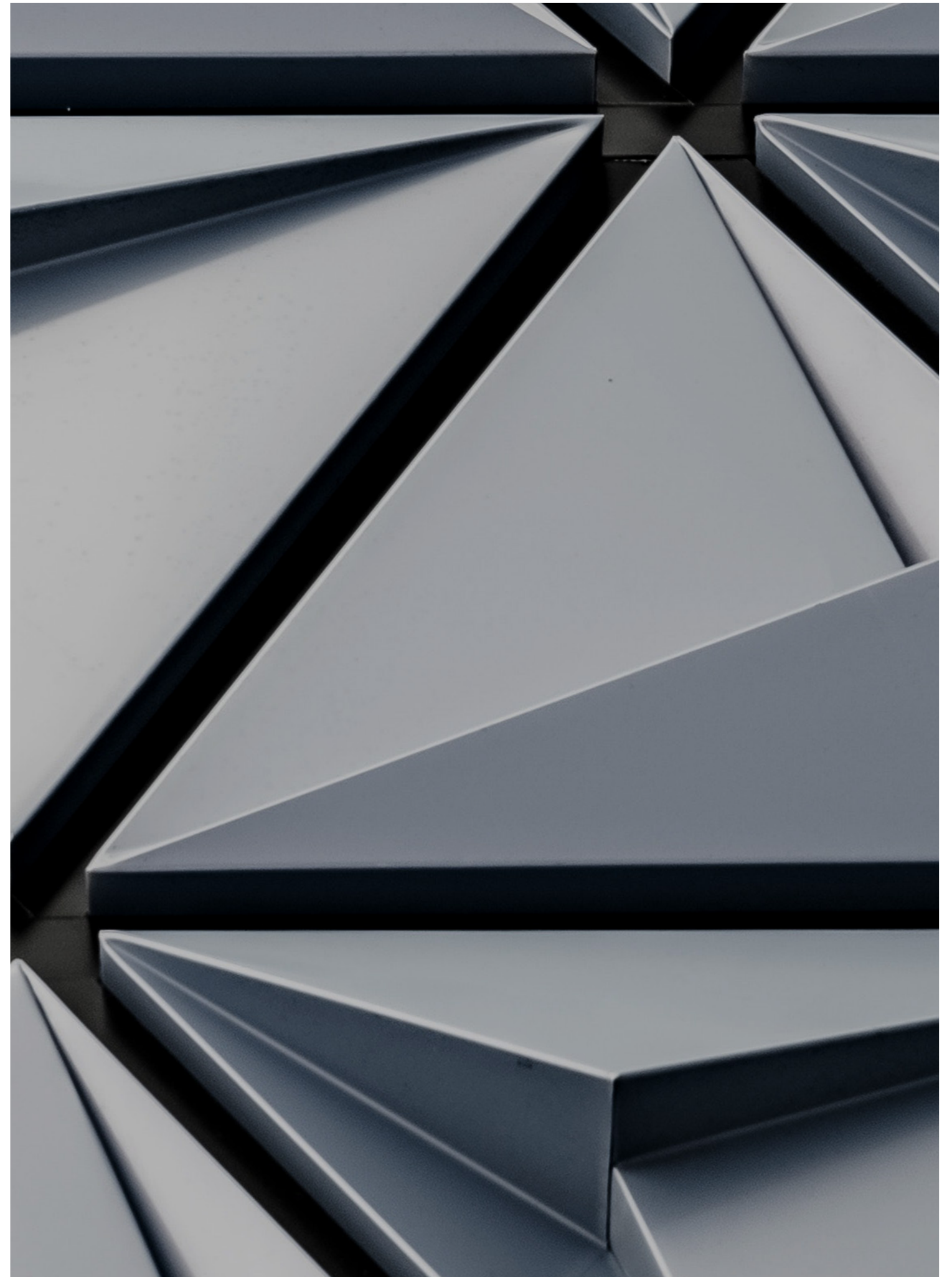
The products in the Industrial range are certified according to the US NSF 169 standard, universally recognised as a guarantee of quality, safety and reliability. Metal, plastic and elastomer materials are carefully selected to meet the established requirements for materials in contact with food.



## VDE-UL-CSA CERTIFICATIONS



The coils in CEME Group's range are certified according to the standards set by the main European and US organisations.





## **CONTACT** INFORMATION

[www.cemegroup.com](http://www.cemegroup.com)  
**in**

Registered Office  
Viale dell'industria, 5  
27020 - Trivulzio (PV), Italia

Ph.: +39 038293011  
E-mail: [info@cemegroup.com](mailto:info@cemegroup.com)