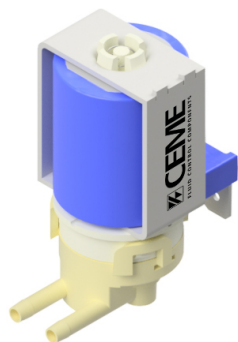


## DIAPHRAGM SOLENOID PUMP LOW PRESSURE



### HIGHLIGHTS

- Self priming at 0 bar
- Class 2
- Compact design
- Total media separated
- Low noise

### PRODUCT DESCRIPTION

The Ceme E100 diaphragm solenoid pumps have been designed mainly for household appliance use and can guarantee highest operation reliability. Compact design, low noise and total media separation are some of the key points of this range of pumps.

### GENERAL FEATURES

Tube guide material	PA66	
Seal material	EPDM	
Piston and springs	Stainless steel High corrosion resistance	
Fluid temperature	35°C	
Ambient temperature	65°C	
Tube	PA66	
Working fluids	Water	
Electrical connection	6,3 x 0,8 fast-on terminal	
Insulation class	F	
Hydraulic connections	INLET: Hose tail 3.5mm	OUTLET: Hose tail 3.5mm
Mounting position	any	

### SPECIFICATIONS

MODEL	Voltages	ON/OFF	Class	Coil Power Watt	Approvals
E100	230V ~ 50/60 Hz	ED100%	F	11/9W	VDE

