



CEME

FLUID CONTROL COMPONENTS



Coffee



Beverage



Refrigeration
Air-conditioning



Steam



Medical



Welding



Water
Management



Other-Industrial

Water beverage *solenoid valves and pumps*

- **SOLENOID VALVE** - quick connection for cold and hot water
- **DISPENSING VALVE** - 2 or 3 Inlet & 1 Outlet
- **PERIPHERAL PUMP FOR CARBONATOR**
- **SOLENOID PUMP**

CEME introduces its wide range of components dedicated to beverage system.

These products have been designed by **CEME** with the aim of bringing innovative solutions and high quality components for Water Refrigerator system as well as Reverse Osmosis System for drinkable water.

CEME has put in place its decades of experience in developing products in compliance with the most relevant norms related to potable water and food grade.

CEME, SOLENOID PUMPS AND VALVES

Electro-pumps, solenoid valves, pressure switches, flow meters for a perfect fluid control

Established in 1974, CEME is now a landmark of reference for industrial pumps and valves production in Italy and throughout the world. Over the years, the company has diversified its product range and their applications

enriching its array of electro-pumps, solenoid valves, pressure switches, flow meters and other components to properly control the passage of any type of fluid: water, gas, steam, air.

CEME is renowned for its technical engineering know-how, quality, flexibility and for the distinctive ability to develop innovative solutions for customers on the Italian and international markets. Technology needs control.

V791 - 2/2 WAY - NC



GENERAL FEATURES

Hydraulic body: Thermoplastic PA66 30%FV

Inlet / Outlet: John Guest 4/6/8mm - 1/4"

Sealing on the mobile core: VITON rubber for alimentary use

Overall dimensions: according with the drawing of the model

Electrical connections: 6,3 x 0,8 fast-on terminals

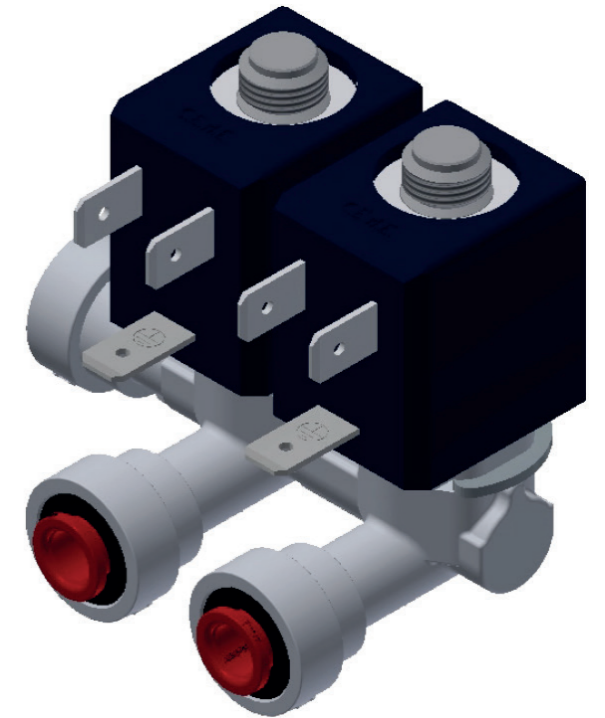
Electrical insulation class I: according with EN 60 335-1

Operation: Direct Acting

Working pressure: 0-8 bar

Internal hole: 2,5mm

V730 - NC 2 Inlet - 1 Outlet



GENERAL FEATURES

Hydraulic body: Thermoplastic PA66 30%FV

Inlet / Outlet: John Guest 4/6/8mm - 1/4"

Sealing on the mobile core: VITON rubber for alimentary use

Overall dimensions: according with the drawing of the model

Electrical connections: 6,3 x 0,8 fast-on terminals

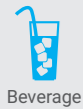
Electrical insulation class I: according with EN 60 335-1

Operation: Direct Acting

Working pressure: 0-8 bar

Internal hole: 2,5mm

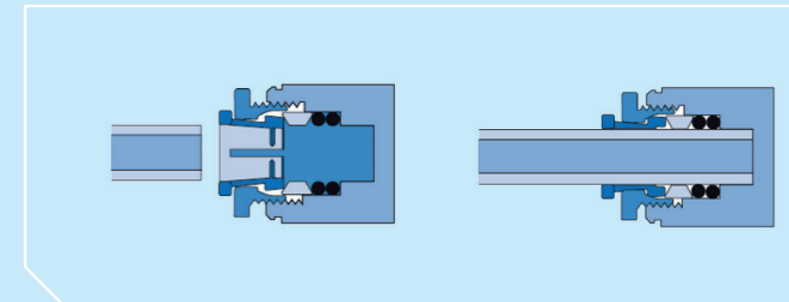
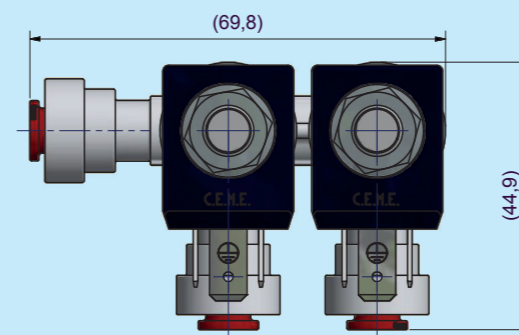
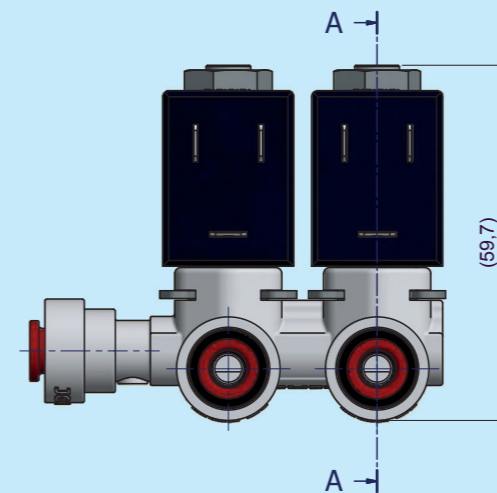
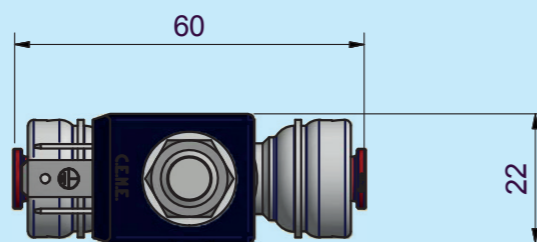
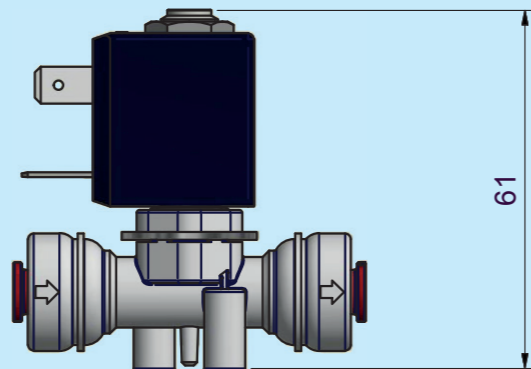
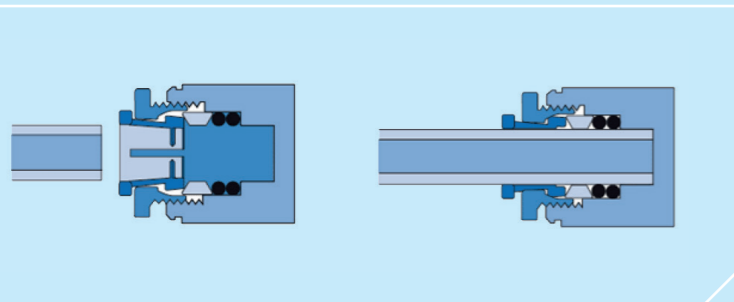
2



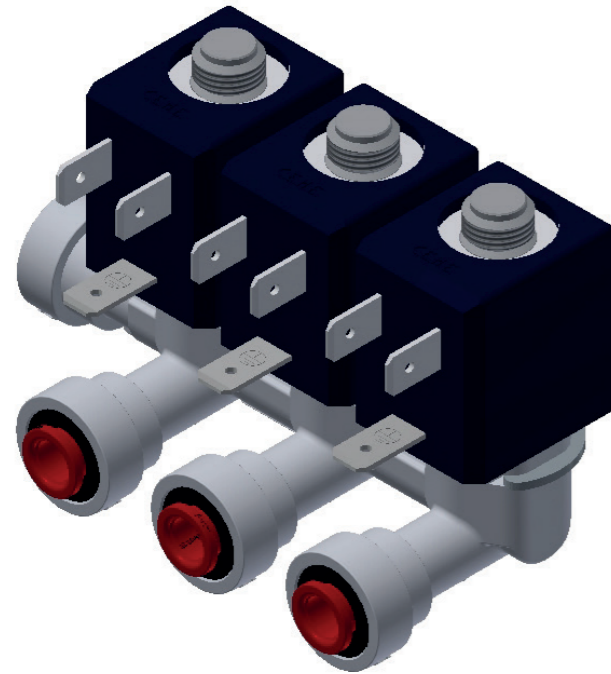
Beverage



Beverage



V731 - NC 3 Inlet - 1 Outlet



GENERAL FEATURES

Hydraulic body: Thermoplastic PA66 30%FV

Inlet / Outlet: John Guest 4/6/8mm - 1/4"

Sealing on the mobile core: VITON rubber for alimentary use

Overall dimensions: according with the drawing of the model

Electrical connections: 6,3 x 0,8 fast-on terminals

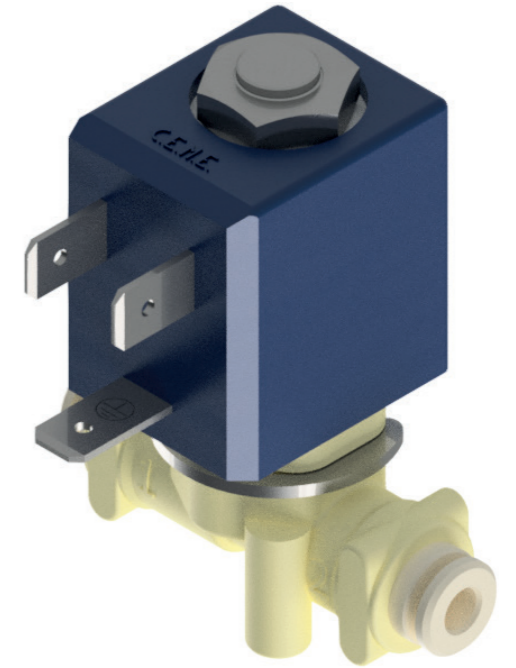
Electrical insulation class I: according with EN 60 335-1

Operation: Direct Acting

Working pressure: 0-8 bar

Internal Hole: 2,5mm

V796 - 2/2 way - NC



GENERAL FEATURES

Hydraulic body: Thermoplastic PPA

Inlet / Outlet: Quick connection AVS Römer 4/6/mm

Sealing on the mobile core: VITON rubber for alimentary use

Overall dimensions: according with the drawing of the model

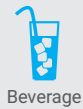
Electrical connections: 6,3 x 0,8 fast-on terminals

Electrical insulation class I: according with EN 60 335-1

Operation: Direct Acting

Orifice size mm	Flow m³/h	MOPD (bar)***	
		AC	DC
1.0	0.03	25	23
1.2	0.04	23	20
1.5	0.07	17	15
2.0	0.10	13	9
2.5	0.12	9	6

4

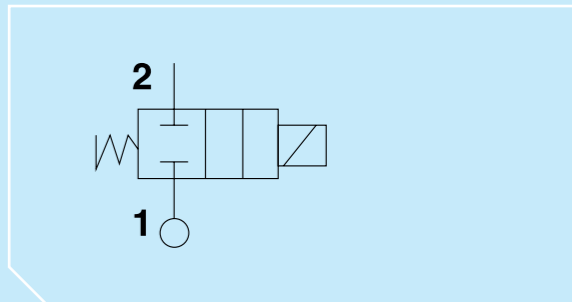
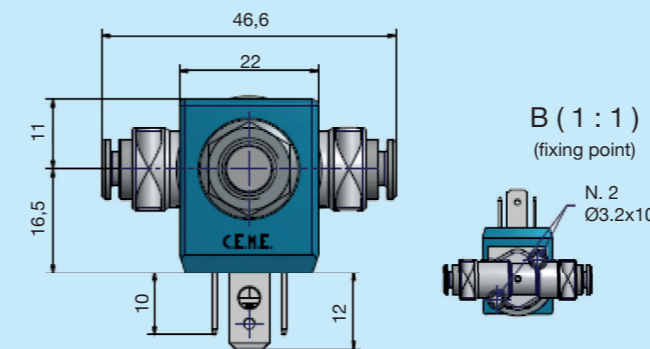
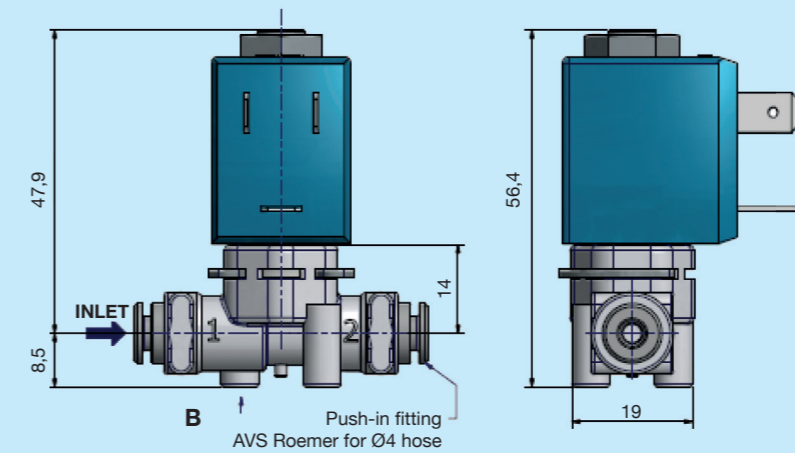
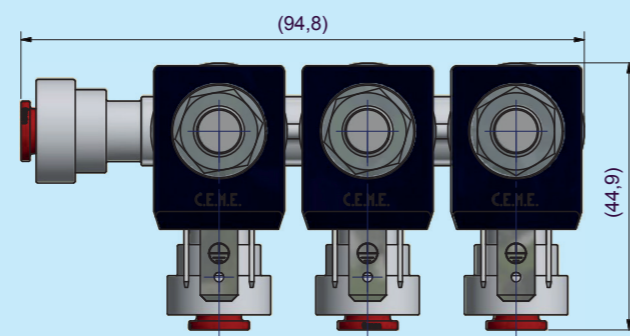
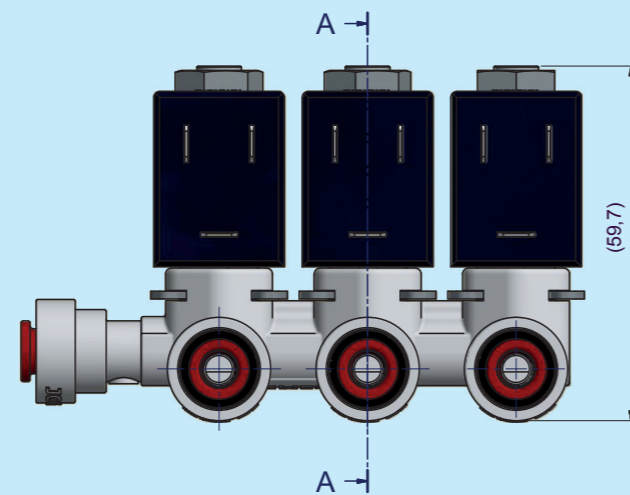
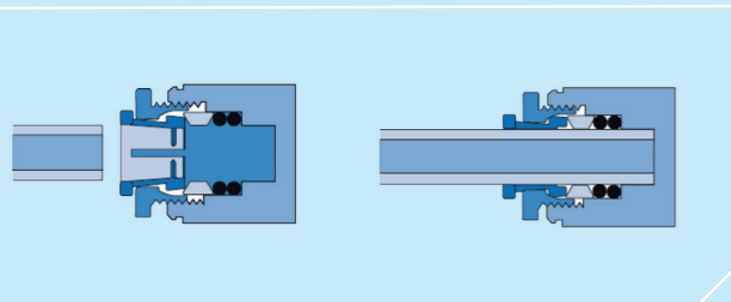


Beverage

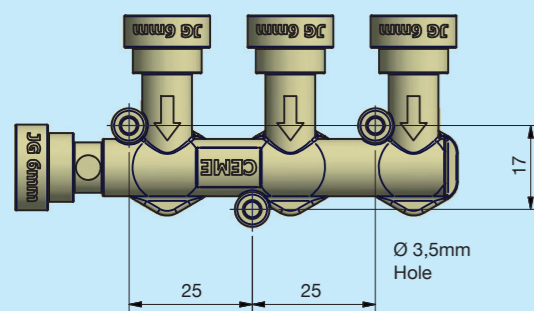
5



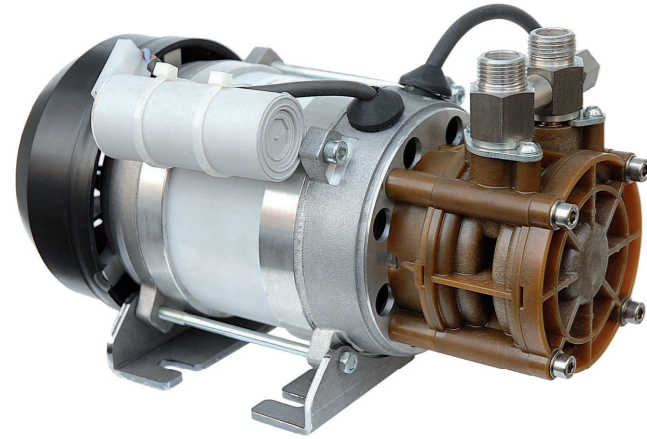
Beverage



Holes for fixing



MTP 700 Peripheral pump



MAIN TECHNICAL FEATURES

Materials:

Pump Body: PEI reinforced, FDA-NSF approved

Shaft: Stainless steel AISI430FM

Impeller: PPS/PEEK reinforced, FDA - NSF approved

Mecanichal Seal: Ceramic/graphite/NBR -NSF Approved

Seals: EPDM or NBR FDA approved

NSF approving for the complete pump: in progress

Motor:

Standard: Single or Three phase induction motor
250W – 230V– 50Hz - 2800rpm – IP00 with capacitor and thermal protection 140°C insulation class F/B, Fan cooled.
Other voltages , frequencies and configurations are available, contact our TEC dep. for a feasibility request.

MTP 700 Peripheral pump

WORKING CONDITIONS:

Ambient T°: -10° / 50°C

Fluid T°: -10° / 80°C

Duty: 100% ED. Suitable for use with water and low corrosive / abrasive fluid

Max. allowable pressure: 12,5 barg (185 psi)

Note: The inlet pressure must be add on the above performance curve with the relative effect on the flow rate.

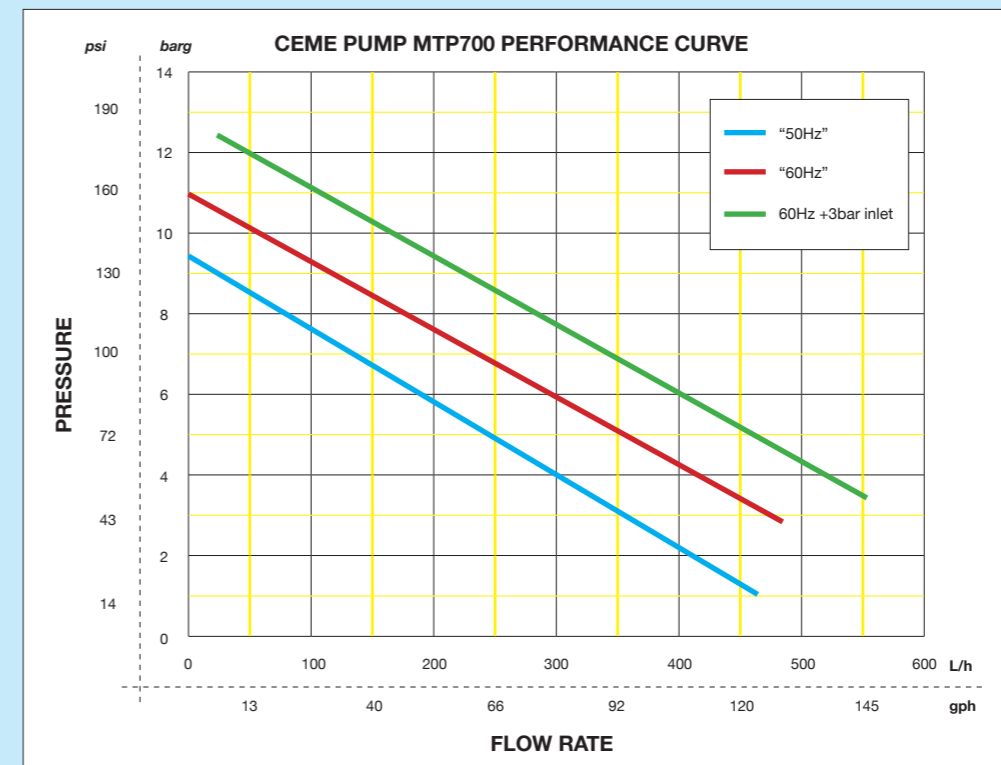
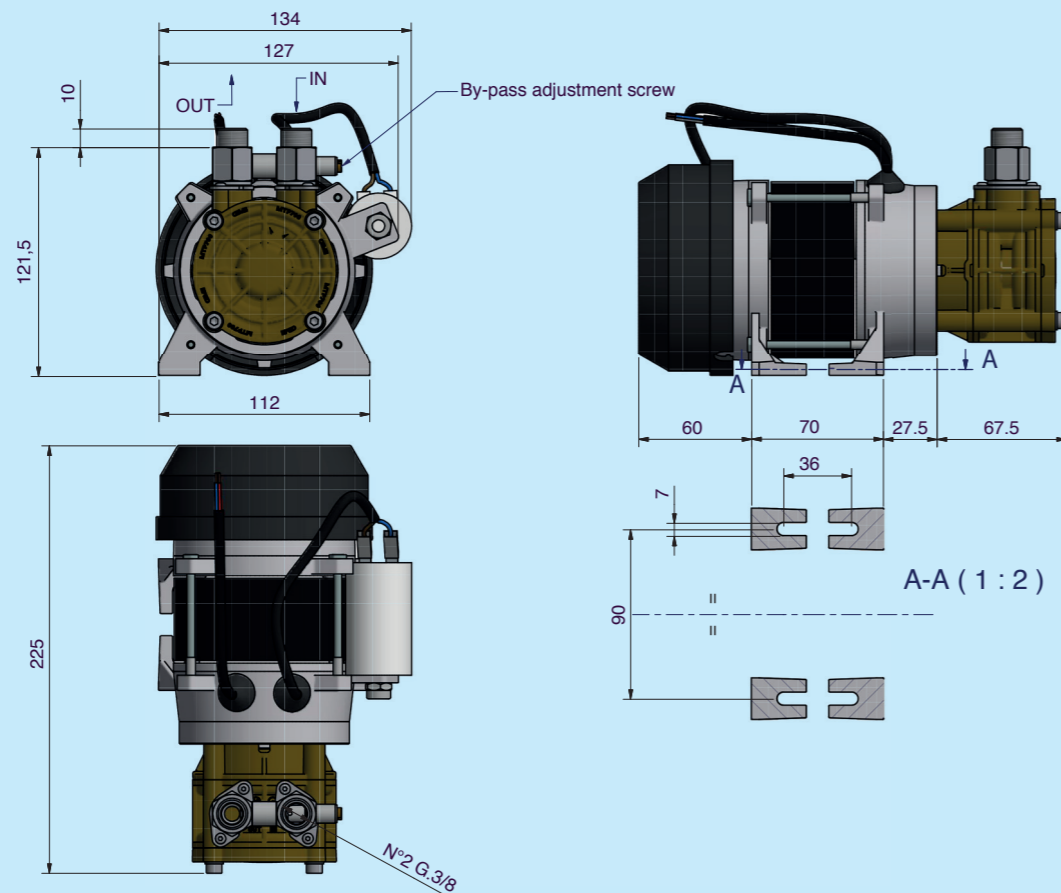
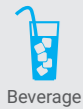
Suction Head: 150 mm. before priming, 2000 mm. after priming.

In case of different conditions please contact our TEC dep. for a feasibility request

Executions

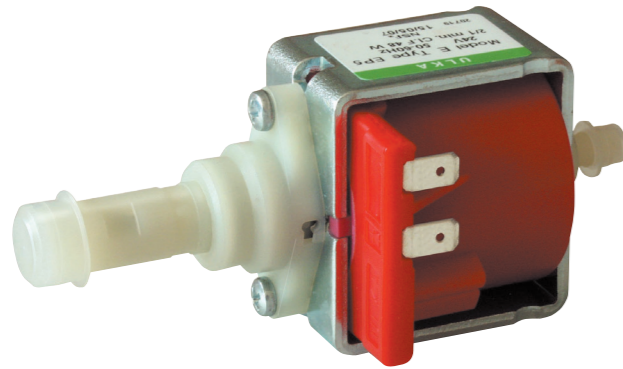
Standard: Horizontal installations with a 50cm of electrical cable and a G.3/8 "Male, facing up.
Other configurations are available, contact our TEC dep. for a feasibility request.

A balanced settable by-pass valve is also available.



NOTE: Hydraulic characteristics obtained with waters at 20° C at pump nominal speed.
Working tolerance on Hydraulic and Electrical characteristics is ± 10%

EP 5 Solenoid pump

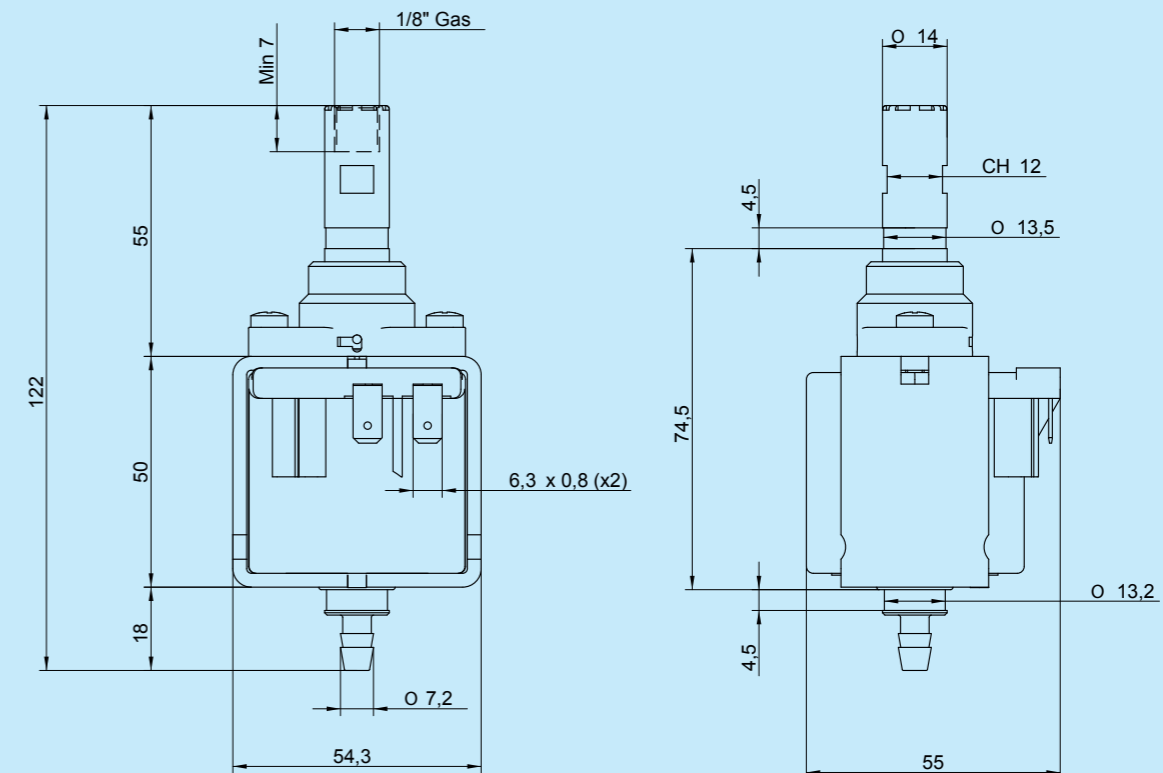
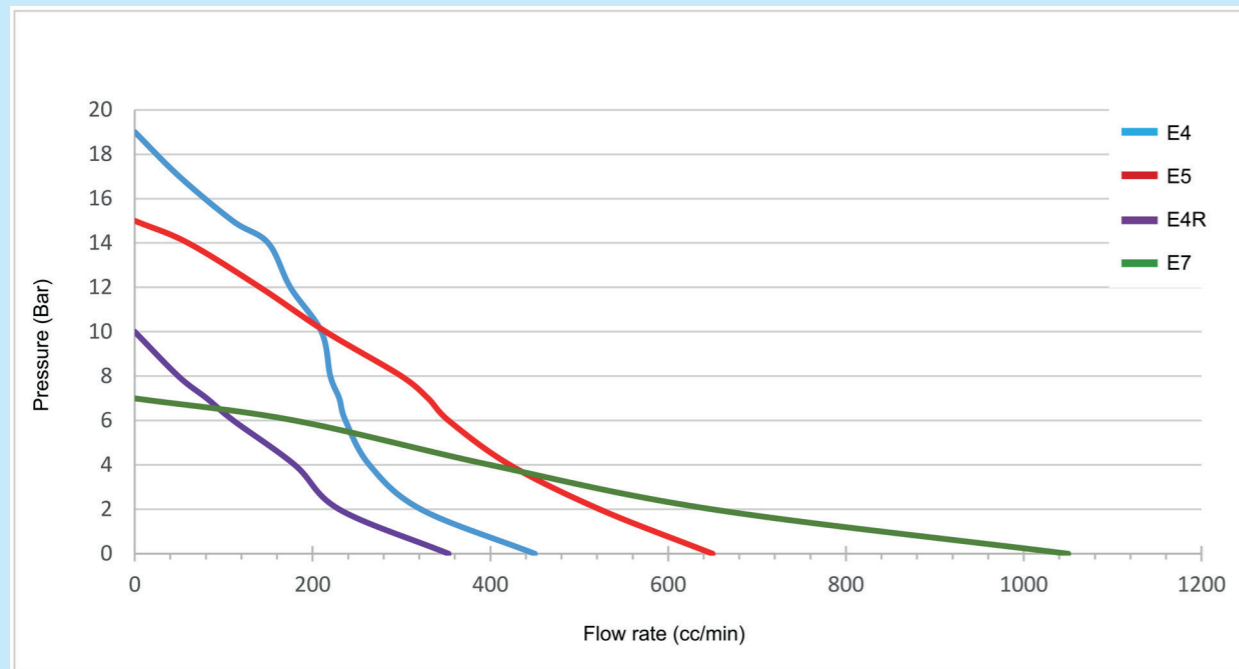
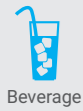


- Electrical insulation class II
- Diode integrated (except for 24V)
- Approvals: VDE, IMQ, c UI
- Voltages: 100V / 50-60Hz - 120V / 60Hz - 220V 50Hz - 230V 50Hz - 240V 50Hz - 24V 50-60Hz

Description	Technical data	
	Body material	PA66/POM
	Seal material	NBR (OTHER MATERIAL AVAILABLE ON REQUEST)
	Electrical connection	6,3 x 0,8 fast-on terminal
	Insulation class	F

EP 5 Solenoid pump

Pressure (bar)	Average Flow Rate (cc/min)			
	E4	E5	E7	E4R
0	450	650	1050	350
2	315	520	650	230
4	260	420	400	180
6	240	350	180	110
7	230	330	0	80
8	220	300	-	50
10	200	210	-	0
12	160	140	-	-
14	130	60	-	-
15	100	0	-	-
17	40	-	-	-
19	0	-	-	-





 **CEME**
FLUID CONTROL COMPONENTS

CEME SPA
Uffici e Stabilimento
Via Garibaldi, 63
20061 Carugate (MI)

CEME ZHONGSHAN CO.LTD
Industrial Road, nr.38
528415 Xiaolan Town, Zhongshan City,
Guangdong Province, P.R. China

CEME USA
33801 Curtis Blvd, nr.110
44095 Eastlake,
OHIO

Tel. +39 02 921568 1
Fax +39 02 92150220
ceme@cemegroup.com
www.cemegroup.com

Ph. +86 760 22288986
Fax +86 760 2288987

Ph. +1 440 2263200
Fax +1 440 4244970



Coffee



Beverage



Refrigeration
Air-conditioning



Steam



Medical



Welding



Water
Management



Other-Industrial

Water beverage
solenoid valves and pumps