

# **WATER** MANAGEMENT

*Portfolio*

ENGLISH **EDITION**







# WATER MANAGEMENT

CEME Group provides a comprehensive range of water management products.

Complete system solutions for managing water in domestic filtration systems and the sanitary sector, as well as products designed for fluid management in home and industrial appliances.



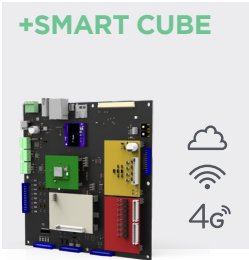
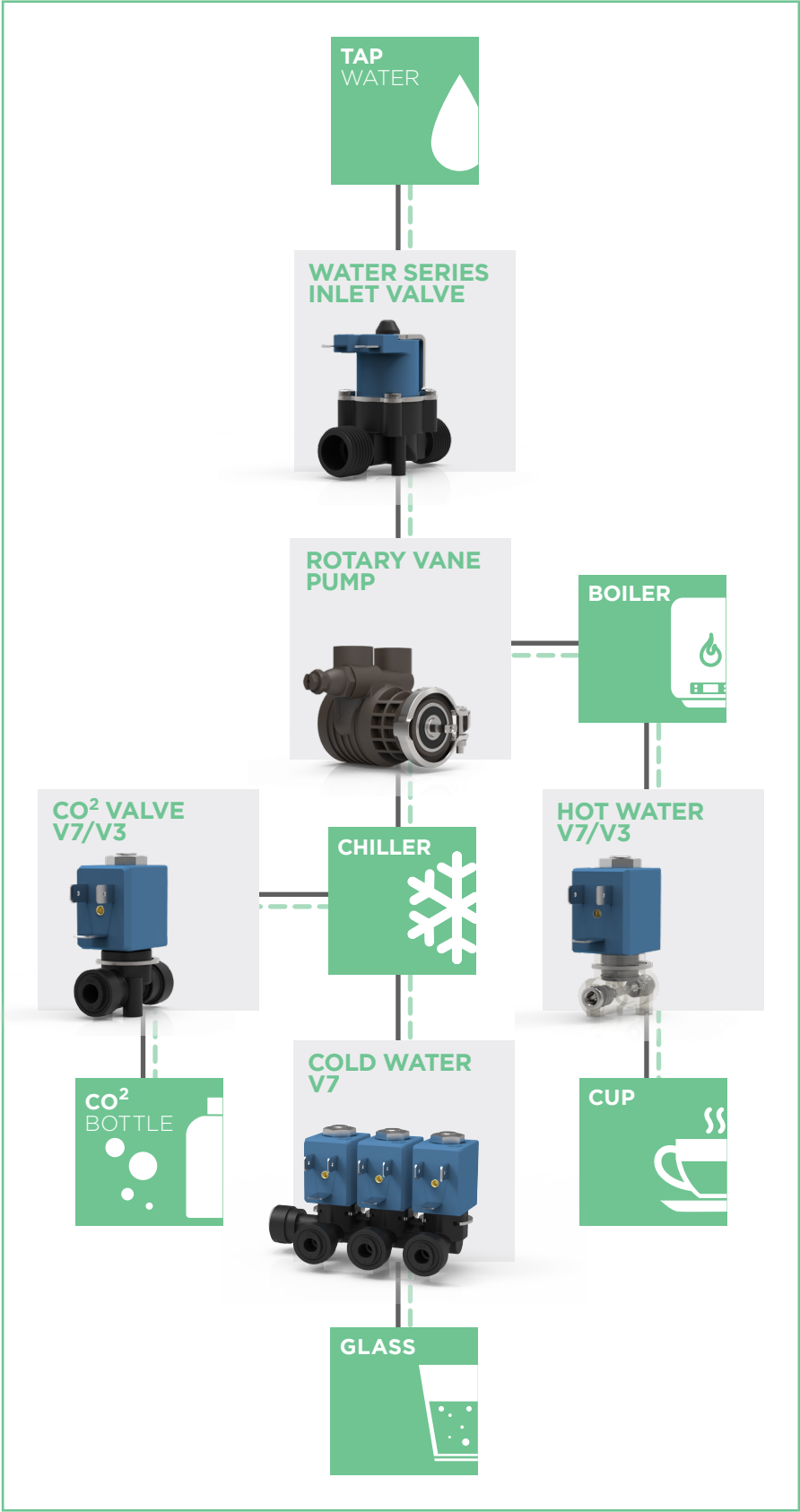
WATER  
TREATMENT



SANITARY

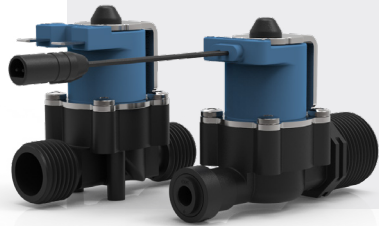


HOME/INDUSTRIAL  
APPLIANCES





# WATER TREATMENT



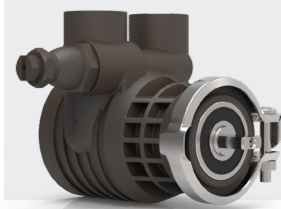
## WATER SERIES

The new CEME **Solenoid Valve for water management market** is a 2/2 way pilot operated valve with Ø11 mm and an hydraulic body in PA66. Different power supply sources are available. It can work with pressure ranging from 0.1 to 10 bar. Latching and low-power versions with cable connector are also available.



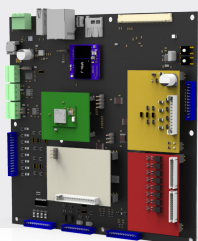
## V7/V3 SERIES

2/2 way normally closed direct acting Solenoid Valves. These valves are available with different connections and performance in order to meet any kind of needs. **The body is made in glass fibre reinforced PA or PPSU**, while the tube is in stainless steel. This type of valves can work with pressure ranging **from 0 to 25 bar**, and a fluid temperature of up to 145°C.



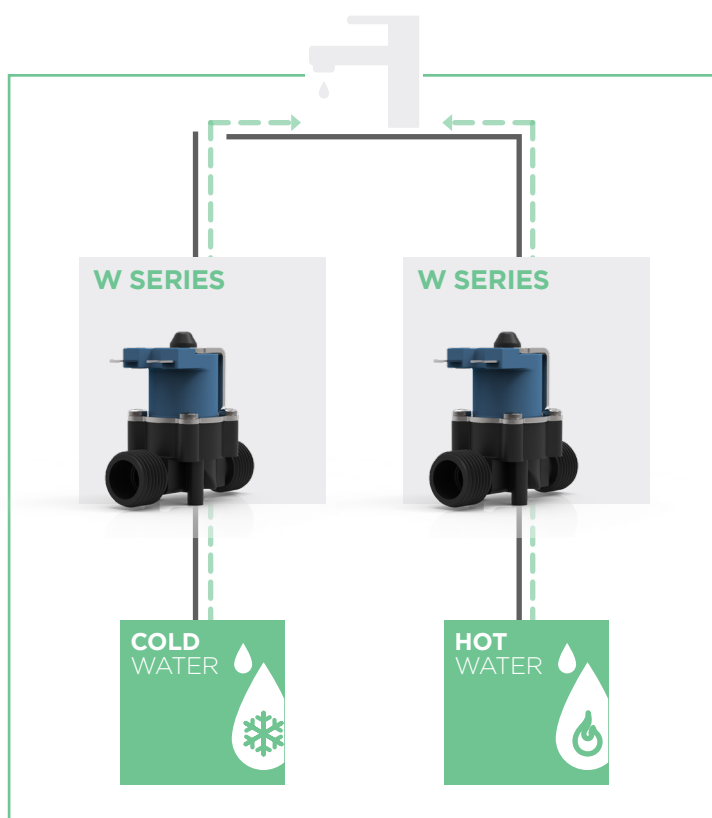
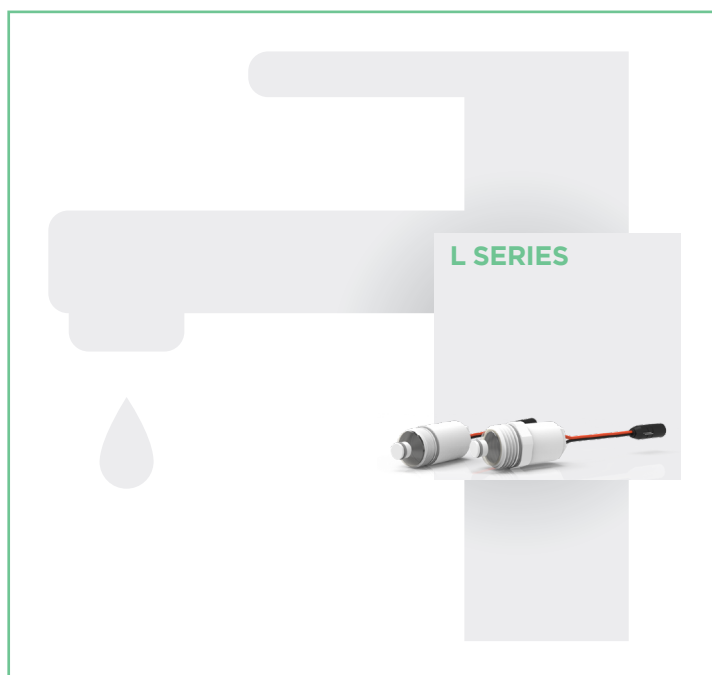
## ROTARY VANE PUMP

MOCAREEL® represents an important innovation in the ODE product range thanks to the use of PPS, carbon graphite and stainless steel materials. The technopolymer body has features similar to those of metal bodies. The use of **PPS** (technopolymer) **ensures the achievement of specific food grade certifications** such as NSF and European Regulation No. 1935/2004.



## +SMART CUBE

**+SMART CUBE** is the **intelligent control** choice for real-time communication with an integrated ETHERNET bus with expandable I/O; the scalable CPU allows to upgrade/downgrade performance depending on the respective application.

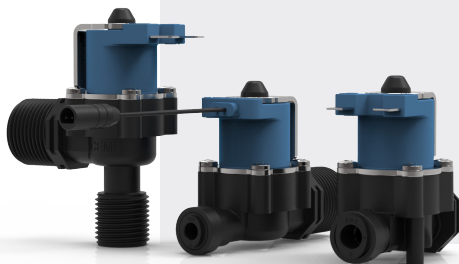


# SYSTEM SANITARY



## LATCHING SOLENOID VALVE

A very compact design for the new Latching Valve. 2/2 way servo controlled valve with Ø 5 mm. The hydraulic and mechanical concept has been developed considering **long-term performances**, durability and battery life as priority targets. **Body valve in PPSU** and all the materials are compliant with the main regulations for drinking-water applications.



## WATER SERIES

The new CEME Solenoid Valve for water management market is a 2/2 way pilot-operated valve with Ø11 mm. These valves are a **very compact design and are made by longlife material**. Different power supply available. Ensuring low-power consumption, these valves can work with pressure ranging from 0.1 to 10 bar. Different types of connections are available (male threaded connections, push fit, 90° outlets, etc.).

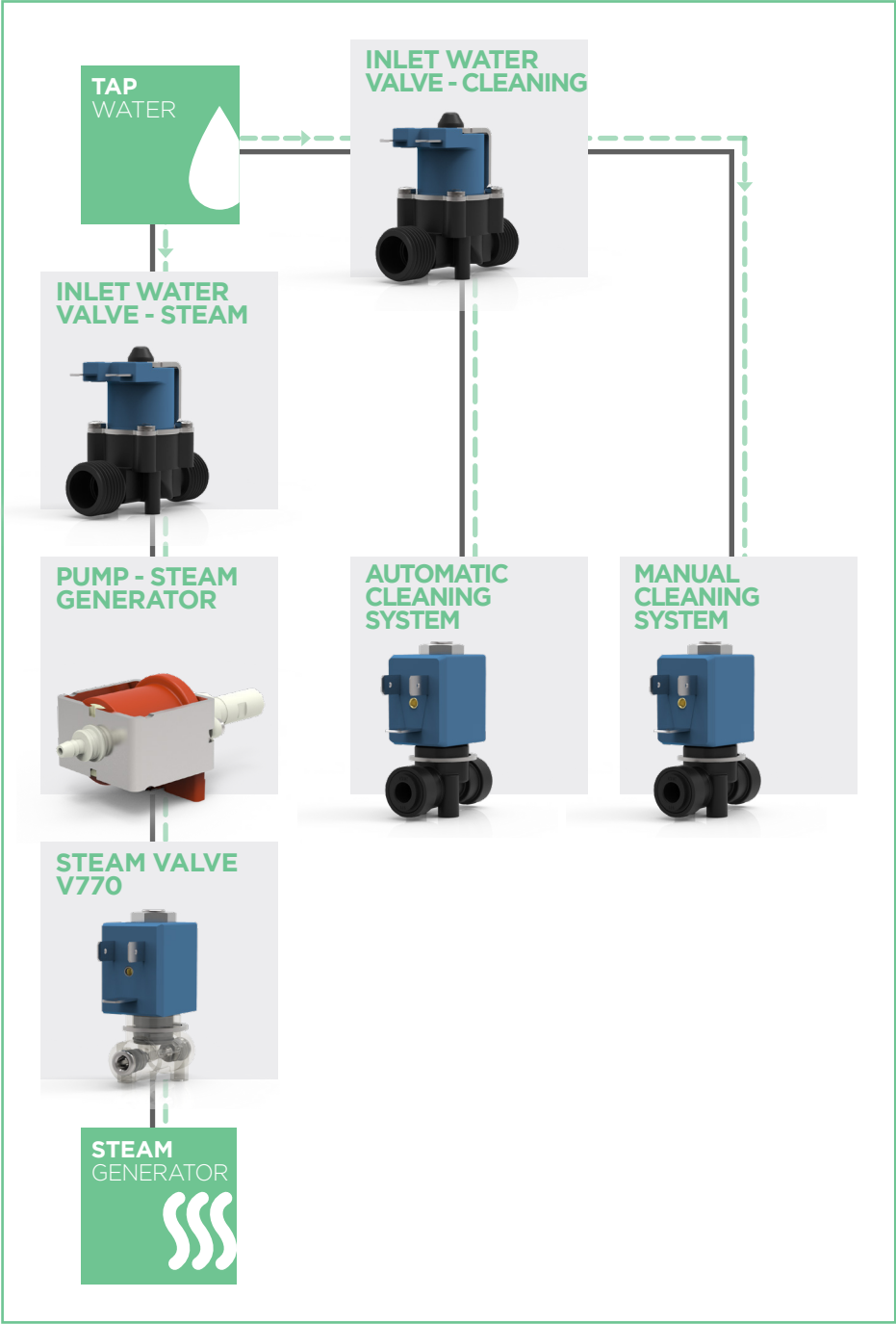
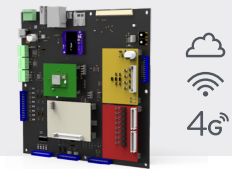


## +SMART ONE

A completely new product in the market of solenoid valves. This system allows the development of any application in a **simple and intuitive way, as well as control, monitoring and wireless operation** of the solenoid valves applied. The main features include the integration of a PLC with the Wi-Fi system through which it is possible to manage a control terminal block for digital inputs/outputs.

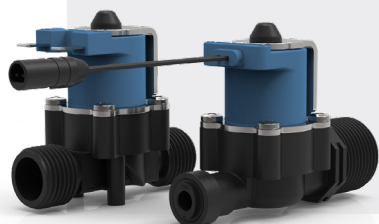


**+SMART CUBE**





# HOME/INDUSTRIAL APPLIANCES



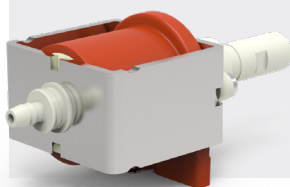
## WATER SERIES

The new CEME Solenoid Valve for water management market is a 2/2 way pilot-operated valve with Ø11 mm. These valves are a **very compact design and are made by highly durable material**. Different power supply sources are available. Ensuring low-power consumption, these valves can work with pressure ranging from 0.1 to 10 bar. Different types of hydraulic connections are available.



## V7/V3 SERIES

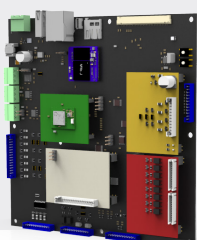
Solenoid valve 2/2 way, normally closed direct acting. These valves are available with different connections and performance in order to meet any kind of needs. The **body is made in PPA**, while the tube is in stainless steel. This type of valves can work with **pressure ranging from 0 to 25 bar**, and a fluid temperature of up to 145°C.



## PUMPS

A wide range of compact or standard solenoid pumps, from 2.5 to 20 bar, **certified VDE, CE, CQC, UL, CB, NSF, LFGB**. These solenoid pumps are available with plastic outlet – EP and also with brass outlet – EX.

These type of pumps provide a compact solution for high-pressure and low-flow applications.



## +SMART CUBE

**+SMART CUBE** is the **intelligent control** choice for real-time communication with an integrated ETHERNET bus with expandable I/O; the scalable CPU allows to upgrade/downgrade performance depending on the respective application.

# WATER MANAGEMENT ACCESSORIES



## PF CONNECTION

The innovative Push-Fit Connection **allows the Water Series Valves to be connected to the water supply system** precisely and safely using a rapid connection. This fitting contains a check valve that allows the water inside the valve to be isolated from that of the supply system.



## MOUNTING BRACKET

Plastic bracket used for **fixing the water valve** where necessary. The bracket can be used in different positions.



# CERTIFICATIONS AND SUSTAINABILITY

## OUR PROGRESS

The Company is committed to making ongoing progress, while also strengthening its relationship with its key stakeholders. As a direct consequence of this commitment, the Group aims to continue to increase its understanding of how social and environmental sustainability matters relate to its daily activities: this is the main reason behind CEME Group's decision to extend its GHG emissions monitoring and reporting to new Scope 3 categories.

## QUALITY ASSURANCE

Customer satisfaction, systematic product improvement and excellent service: these are the key elements in the success of a company.

The path leading to their achievement must follow the rigid rules known as "Quality Assurance". The idea of quality has always been part of the culture of CEME Group and its brands: a continuous process control, a computerised network to guarantee product conformity, the recording of each step to ensure an effective analysis of data, as well as a complete and efficient traceability of both components and finished products.



# CONTACT

---

## INFORMATIONS

[www.cemegroup.com](http://www.cemegroup.com)



Registered Office  
Viale dell'Industria, 5  
27020 - Trivulzio (PV), Italy

Ph.: +39 0382 93011  
E-mail: [info@cemegroup.com](mailto:info@cemegroup.com)